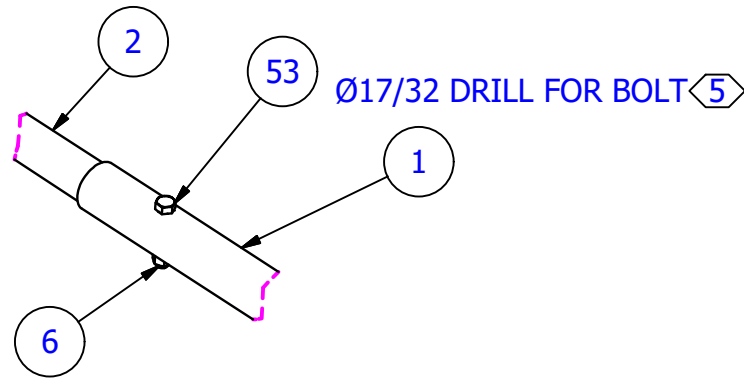
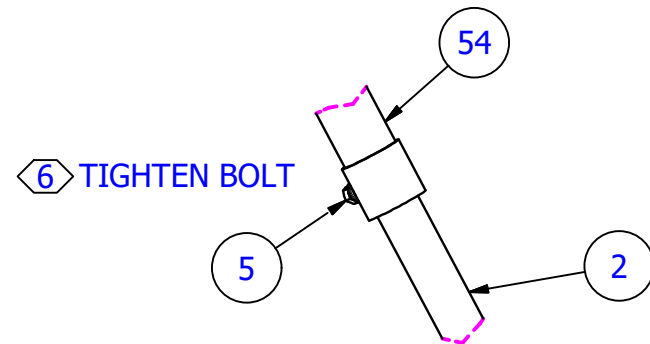


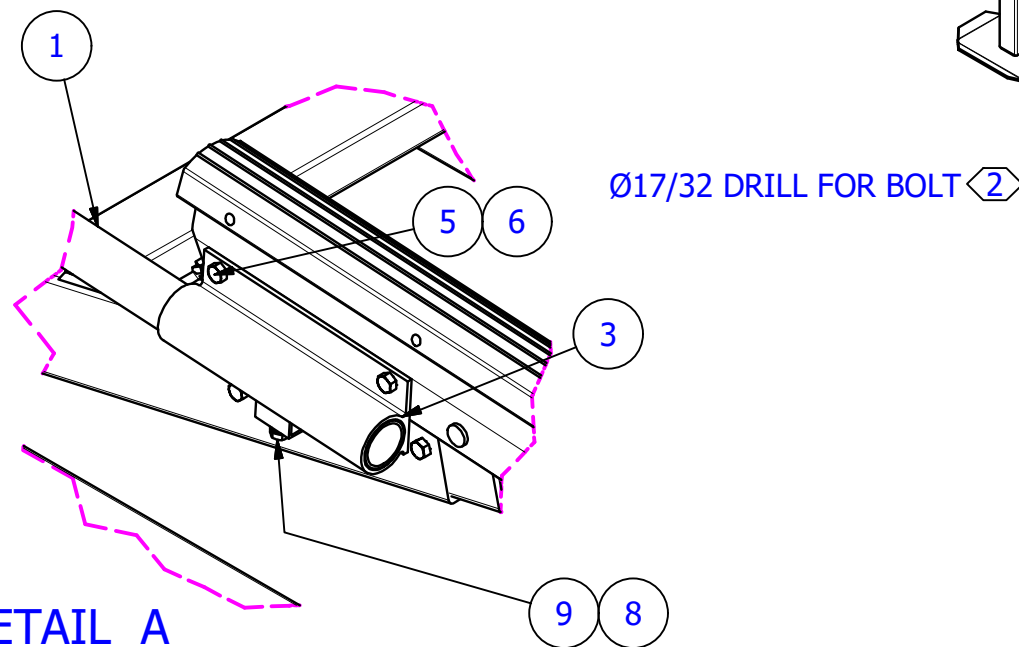
ITEM	PART NUMBER	DESCRIPTION	QTY	BASE UNIT
1	4107817R1	HL5-9K PVC BOW STOP AL PIPE EXT 72"	2	EA
2	4107816	HL5K-HL9K BOW STOP ARM AL PIPE FORM	2	EA
3	4108575	HL5K-HL9K PVC BOW STOP MTG BRKT 12" WLDMT	2	EA
5	5896281	HHCS 1/2-13 X 1-1/4 SS	6	EA
6	5836107	NUT HEX NYLOCK 1/2-13 ALUM	6	EA
8	5840105	NUT SQ 1/2-13 ALUM	2	EA
9	5896282	HHCS 1/2-13 X 1-1/2 SS	2	EA
53	5896288	HHCS 1/2-13 X 3 SS	2	EA
54	4107486	HL5K-HL9K BOW STOP PVC ASSY GRAY	1	EA



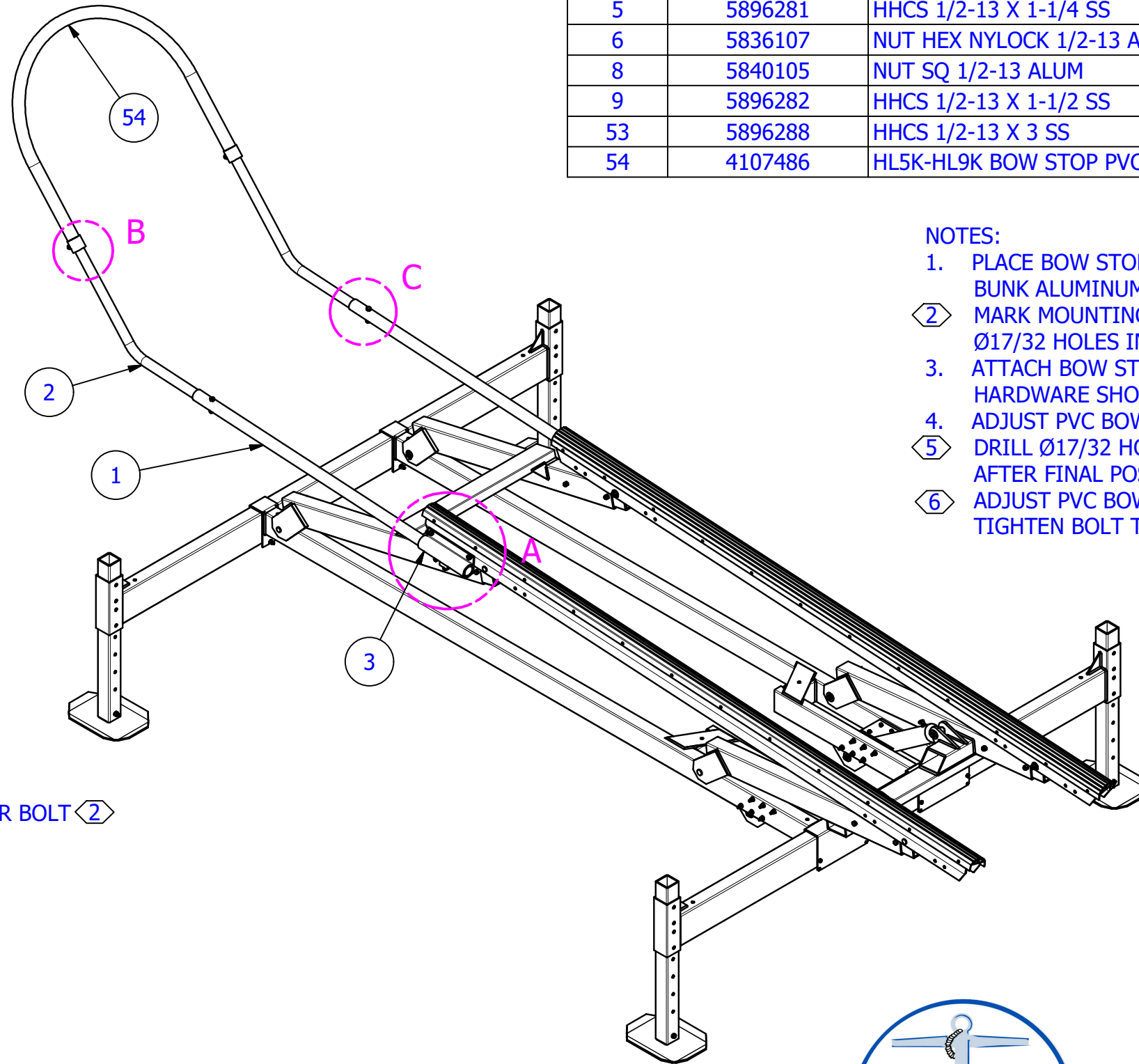
DETAIL C
SCALE 1 / 8



DETAIL B
SCALE 1 / 8



DETAIL A
SCALE 1 / 8



NOTES:

1. PLACE BOW STOP MOUNTING BRACKET AGAINST BUNK ALUMINUM AND VINYL (SEE DETAIL A).
2. MARK MOUNTING HOLE LOCATIONS AND DRILL Ø17/32 HOLES INTO ALUMINUM.
3. ATTACH BOW STOP MOUNTING BRACKET WITH HARDWARE SHOWN.
4. ADJUST PVC BOW STOP TO BOAT BOW.
5. DRILL Ø17/32 HOLES (2) PLCS IN ITEM 2 AFTER FINAL POSITION ESTABLISHED.
6. ADJUST PVC BOW STOP TO DESIRED HEIGHT AND TIGHTEN BOLT TO SET.

CONFIDENTIAL/PROPRIETARY INFORMATION. THIS DRAWING IS THE PROPERTY OF RGC AND IS FURNISHED FOR PURPOSES OF MANUFACTURING AND SHALL NOT BE USED/DISCLOSED BY RECIPIENT FOR ANY OTHER PURPOSE WHATSOEVER.



HL4-7K BOW STOP KIT