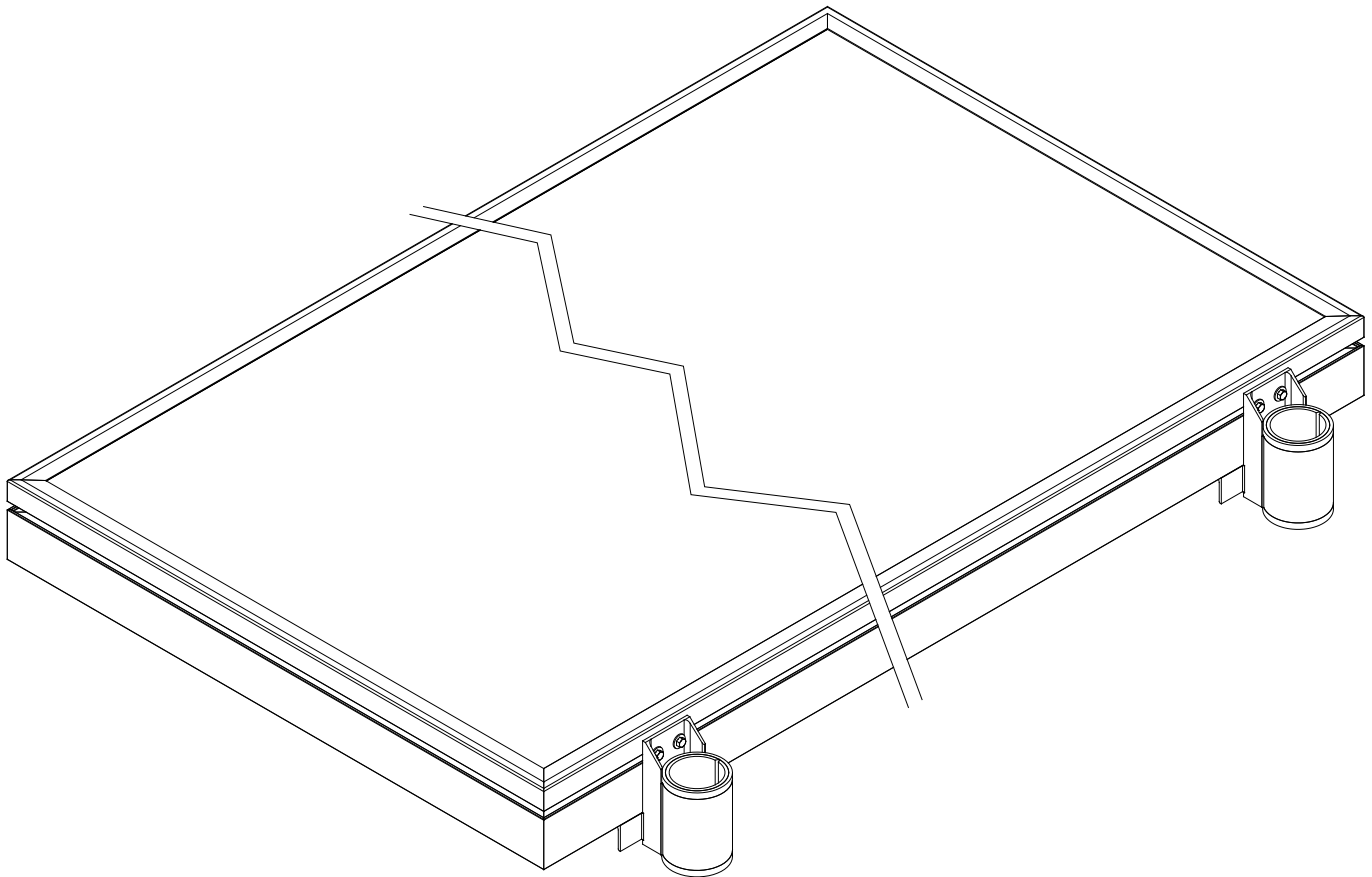




FLOATING DOCK PILE GUIDE 1-1/2" & 2-1/2" PIPE INSTRUCTIONS



REIMANN & GEORGER CORPORATION
MARINE PRODUCTS
P/N 6112240

BUFFALO, NY
7/25/14

1 INSTALLATION AND SETUP

1.1 PRE-INSTALLATION CHECKS

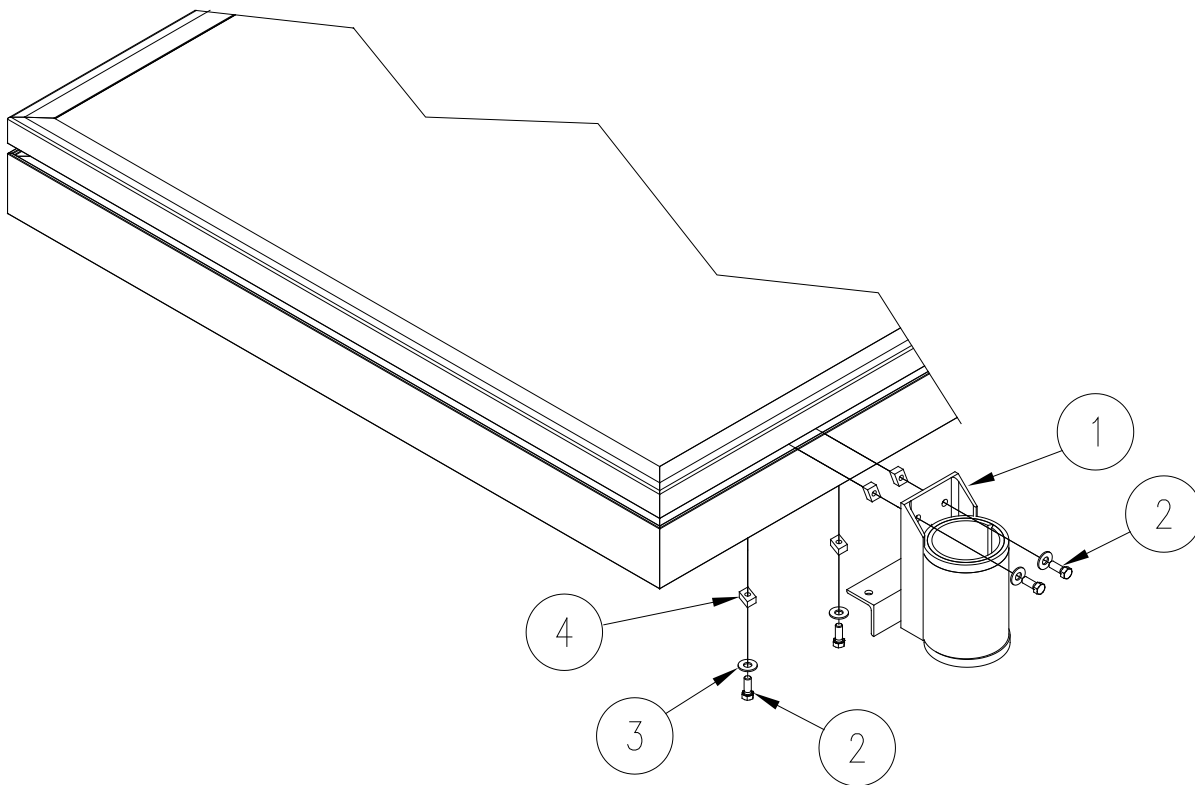
1. Check the packing list to ensure that you have all the parts for the dock configuration you are planning to build. Ensure you have the desired type of deck.
2. If any parts are missing or damaged, contact your local supplier or Reimann & Georger Corporation. Do NOT assemble the dock if any part shows any signs of damage.
3. Do not weld or otherwise modify any part of the dock assembly. Such alterations may weaken the structural integrity of the dock and void the warranty.

1.2 PILE GUIDE MOUNTING INSTRUCTIONS

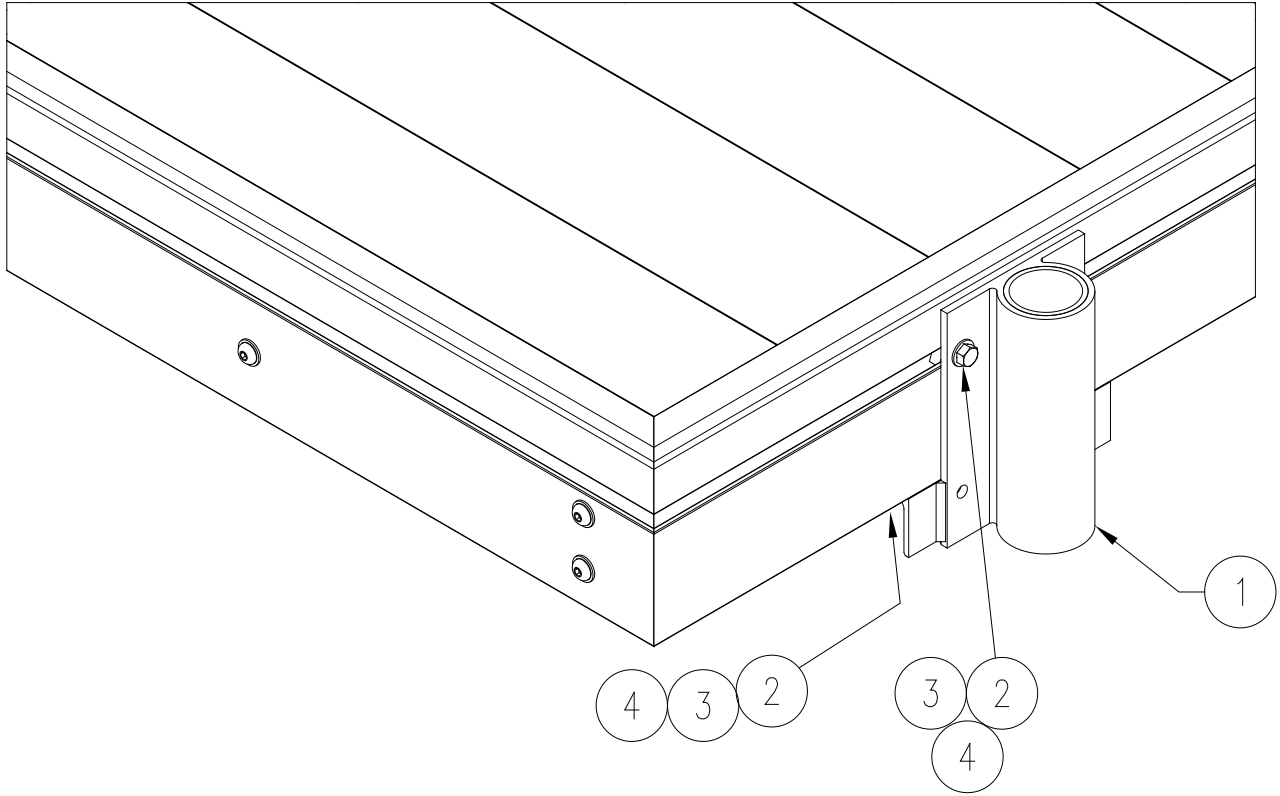


WARNING:

FAILURE TO APPLY A SUITABLE LUBRICANT TO THE MATING SURFACES OF STAINLESS STEEL THREADED FASTENERS MAY CAUSE GALLING AND/OR SEIZING OF ASSEMBLY.



Shown 2-1/2" Pipe Pile Guide Assembly



Shown 1-1/2" Pipe Pile Guide Assembly

2 PARTS LISTS

Each reference number in the following parts lists can be matched with the reference number in both the text and illustrations of Chapter 3, Installation and Setup.

2.1 4070313 FD DOCK PILE GUIDE 2-1/2" PIPE (2.875"OD)

REF #	PART #	QTY	DESCRIPTION
1	4070298	1	FD DOCK PILE GUIDE ASSY
	4070307	1	FD DOCK HINGE BOB includes the following:
2	5896247	4	HHCS 3/8-16 X 1 SS
3	5896406	4	WASHER FLAT SAE 3/8 SS
4	5840701	4	NUT DROP-IN 3/8-16 ALUM

2.2 4070--- FD DOCK PILE GUIDE 1-1/2" PIPE (1.900"OD)

REF #	PART #	QTY	DESCRIPTION
1	4070---	1	FD DOCK PILE GUIDE ASSY
	4070307	1	FD DOCK HINGE BOB includes the following:
2	5896247	4	HHCS 3/8-16 X 1 SS
3	5896406	4	WASHER FLAT SAE 3/8 SS
4	5840701	4	NUT DROP-IN 3/8-16 ALUM