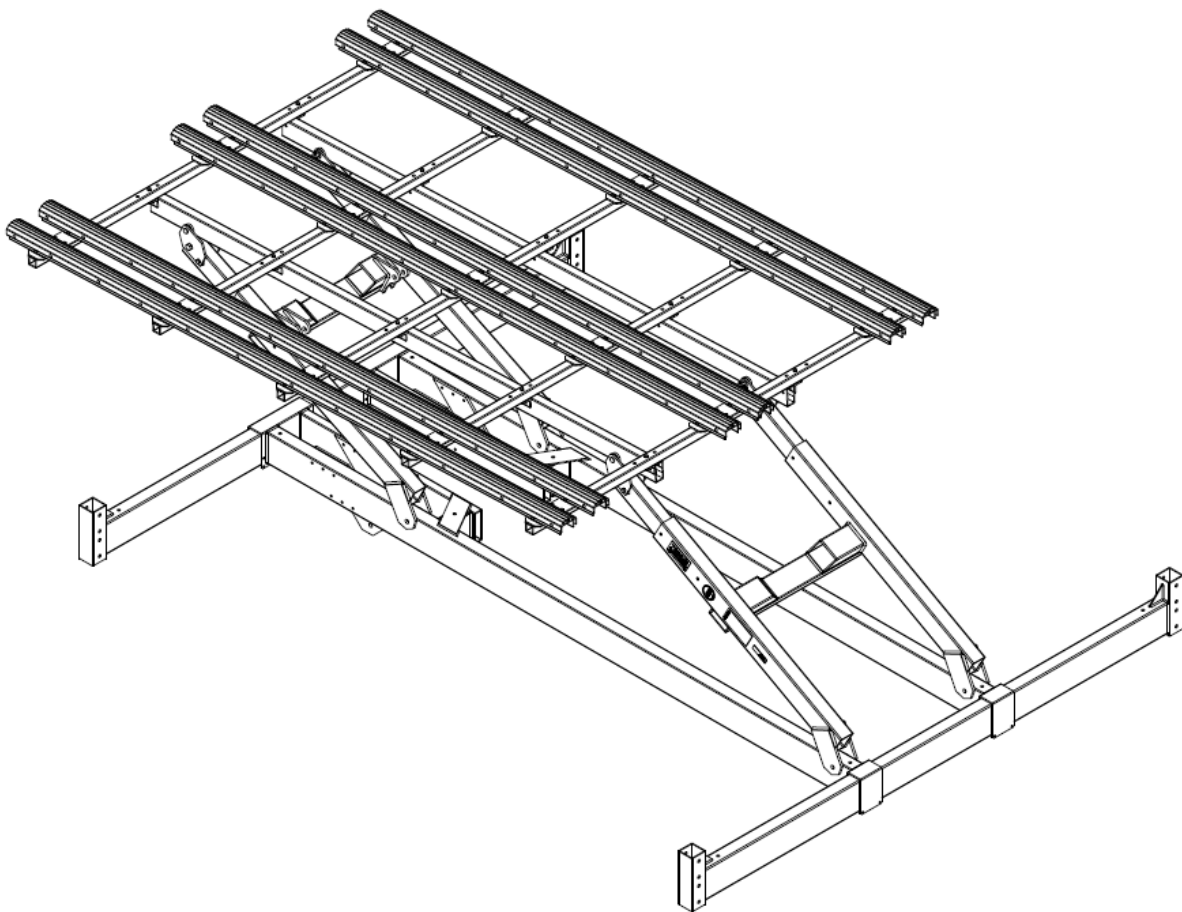




HL5-7K ALUMINUM/VINYL PONTOON & TRITON CRADLE BUNK INSTRUCTIONS

(Applies to P/N's 4197111, 4197114, 4197129, 4197131)



REIMANN & GEORGER CORPORATION
MARINE PRODUCTS
P/N 6114134

BUFFALO, NY
08/04/2022

TABLE OF CONTENTS

CHAPTER	TITLE	PAGE
1	SAFETY	1
1.1	Introduction	1
1.2	Safety Definitions	1
1.3	Equipment Safety Labels	1
1.4	Safety Rules	1
2	INSTALLATION AND SETUP	3
2.1	Pre-Installation Checks	3
2.2	Tools Required	3
2.3	HL5-7K (48" & 60") Liftarm Drilling	3
2.3.1	HL5-7K (48" only) Drilling Liftarms	3
2.3.2	HL5-7K (60" only) Drilling Liftarms	5
2.4	HL5-7K (48" & 60") Liftarm Pivot Plate Mounting	6
2.4.1	HL5-7K (48" only) Pivot Plate Mounting	6
2.4.2	HL5-7K (60" only) Pivot Plate Mounting	7
2.5	HL5-7K (48" & 60") Main Support Tube Mounting	8
2.6	HL5-7K (48" & 60") Pontoon & Tritoon Cross Support Mounting	9
2.7	HL5-7K (48" & 60") Pontoon & Tritoon Cradle Bunk Supports	10
2.7.1	HL5-7K (48" & 60") Pontoon Cradle Bunk Mounting	10
2.7.2	HL5-7K (48" & 60") Tritoon Cradle Bunk Mounting	11
2.8	HL5-7K (48" & 60") Aluminum / Vinyl Cradle Bunk Mounting	12
2.8.1	HL5-7K (48" & 60") Pontoon Cradle Bunk Mounting	12
2.8.2	HL5-7K (48" & 60") Tritoon Cradle Bunk Mounting	14
3	PARTS LISTS.....	16
3.1	HL5-7K Aluminum Vinyl Pontoon Kit	16
3.1.1	HL5-7K (48" only) Pontoon Cradle Bunks	16
3.1.2	HL5-7K (60" only) Pontoon Cradle Bunks	17
3.2	HL5-7K Aluminum Vinyl Tritoon Kit	18
3.2.1	HL5-7K (48" only) Tritoon Cradle Bunks	18
3.2.2	HL5-7K (60" only) Tritoon Cradle Bunks	19

LIST OF FIGURES

FIGURE	DESCRIPTION	PAGE
2-1A	HL5-7K (48" Lift) Drilling Liftarms	4
2-2A	HL5-7K (48" Lift) Drilling Liftarms (Views A & B).....	4
2-1B	HL5-7K (60" Lift) Drilling Extension Tubes	5
2-2B	HL5-7K (60" Lift) Drilling Extension Tube (Views A & B)	5
2-3A	HL5-7K (48" Lift) Mount Liftarm Pivot Plates	6
2-3B	HL5-7K (60" Lift) Mount Liftarm Pivot Plates	7
2-4	HL5-7K (48" & 60" Lift) Main Support Tube Mount.....	8
2-5	HL5-7K (48" & 60" Lift) Cross Support Tubes	9
2-6	HL5-7K (48" & 60" Lift) Pontoon Cradle Bunk Support Mounting	10
2-7	HL5-7K (48" & 60" Lift) Tritoon Cradle Bunk Support Mounting	11
2-8	HL5-7K (48" & 60" Lift) Pontoon Cradle Bunk Mounting	13
2-9	HL5-7K (48" & 60" Lift) Tritoon Cradle Bunk Mounting.....	15

1 SAFETY

1.1 INTRODUCTION

Your Reimann & Georger Corporation Marine Products HL Pontoon or Tritoon (P/T Toon) Lift Kit is designed to lift the boat by P/T Toons, rather than the deck, and aid in proper positioning of boat on the lift. Your P/T Toon Kit is well designed and well built. However, like any other equipment, it can malfunction or become hazardous in the hands of an inexperienced and/or untrained user. Therefore, read this manual, your related Hydraulic Boat Lift manual, and related equipment manuals thoroughly before installing this kit and operating your lift to provide maximum safety for all operating personnel, and to get the maximum benefit from your equipment.

1.2 SAFETY DEFINITIONS

A safety message alerts you to potential hazards that could hurt you or others or cause property damage. The safety messages or signal words for product safety signs are **DANGER**, **WARNING**, and **CAUTION**. Each safety message is preceded by a safety alert symbol and is defined as follows:

DANGER: Indicates an imminently hazardous situation which, if not avoided, **will** cause death or serious injury. This safety message is limited to the most extreme situations.

WARNING: Indicates a potentially hazardous situation which, if not avoided, **could** result in death or serious injury.

CAUTION: Indicates a potentially hazardous situation which, if not avoided, **may** result in minor or moderate injury. It may also be used to alert against unsafe practices and property-damage-only accidents.

1.3 EQUIPMENT SAFETY LABELS

These labels warn you of potential hazards that could cause injury. Read them carefully. If a label comes off or becomes illegible, contact a Reimann & Georger Corporation dealer for a replacement.

1.4 SAFETY RULES



WARNING:

DO NOT INSTALL THIS KIT AND OPERATE THE LIFT WITHOUT READING BOTH THIS MANUAL AND YOUR HYDRAULIC LIFT MANUAL. FAILURE TO DO THIS CAN LEAD TO EQUIPMENT MISUSE WITH RESULTING DAMAGE AND/OR SERIOUS PERSONAL INJURY. CONTACT YOUR RGC® MARINE DEALER IF YOU HAVE ANY QUESTIONS.

1. Do not install this kit without first replacing any damaged or defective parts.
2. This kit does not increase the rated capacity of the lift. Never use the lift beyond its rated capacity. This can damage the kit assembly, lift, and/or boat with resulting serious personal injury.
3. Never try using any part of this kit in an application for which it was not designed.
4. Do not weld or otherwise modify any part of this kit. Such alterations may weaken the structural integrity of the lift and void the warranty.
5. Do not try installing the P/T Toon cradle brackets with the weight of the boat on the lift. This can cause equipment damage and/or personal injury.
6. The following precautions must be observed when lifting any part of this equipment:
 - a. Be sure of your footing.
 - b. Bend your knees and lift with your legs.
 - c. Hold the equipment section close to your body when lifting.
7. After the P/T Toon kit is installed, the safety checks in Steps 8 through 25 must be performed on your lift prior to operation. Details on these checks are given in your Hydraulic lift manual.
8. Before allowing anyone to operate the lift, be sure they fully understand the proper operating procedure.

9. Do not operate the lift under the influence of drugs, alcohol, or medication.
10. Keep people and pets clear during operation of the lift.
11. Keep fingers and clothing clear of all moving parts.
12. Never allow people in the boat any time it is suspended above the water.



WARNING:

DO NOT STAND OR WALK ON THE LIFT WHILE IT IS IN ANY RAISED POSITION. THIS CAN CAUSE SERIOUS PERSONAL INJURY.

13. Do not allow anyone to swim or play under, near or on the lift at any time.
14. Ensure that all bolts and nuts are fastened securely on both this kit and the lift prior to operation.
15. Ensure that the frame is level and square.
16. Completely remove any user or dealer installed locking devices before operating the lift.
17. Ensure the center of gravity of the boat is between forward tube and rear foot plates. The boat must be secured on the lift before raising or lowering. Failure to do this can cause equipment damage and/or serious personal injury.
18. The boat must be stored with the lift in the over center (fully raised) position.
19. A clear visual path is required when using a remote transmitter. Obstacles, radio frequency interference, and weak transmitter batteries will degrade the performance and range of your remote transmitter.
20. Never adjust or service the lift during operation or while connected to the control box.
21. Do not adjust components in the control box while operating the lift.
22. Completely lower the liftarms before performing any type of maintenance or repair.



WARNING:

ALL ELECTRIC DRIVES MUST BE INSTALLED AND INSPECTED BY A CERTIFIED ELECTRICIAN IN ACCORDANCE WITH LOCAL ELECTRICAL CODES. THIS INSTALLATION MUST INCLUDE A PROPERLY WORKING GROUND FAULT CIRCUIT INTERRUPTER. (G.F.C.I.)

23. Never use the lift to hang or store any auxiliary equipment such as boating hardware.
24. At end of operation, secure the control box and the lift to prevent unauthorized use. Never assume you will find the equipment in the same condition in which you left it.
25. Never operate the remote control or hydraulic power unit when connecting or disconnecting hydraulic hoses.

2 INSTALLATION AND SET UP

2.1 PRE-INSTALLATION CHECKS

1. Do not assemble this kit or any other component of the lift if any part shows any sign of damage.
2. The standard aluminum / vinyl bunks supplied with your Hydraulic Lift will not be used with this kit, **BUT**, the mounting hardware for them (clevis pins, cotter pins, flat washers, and polymer washers) will be, whole or in part depending on HL Lift model.
3. Do not weld or otherwise modify this kit or any other component of the lift. Such alterations may weaken the structural integrity of the lift and void the warranty.
4. This product has been supplied with stainless steel hardware to protect against a harsh marine environment and provide outstanding performance. Due to the chemistry and surface condition of stainless steel, there is a natural tendency for the hardware to “gall, lock up, or seize” during assembly. To prevent this from occurring, it is **highly recommended** that the anti-seize supplied in the hardware bag be applied to the mating surfaces of all stainless steel fasteners before assembly. Lubricants containing molybdenum disulfide, graphite, mica or talc may also be used.



CAUTION:

DO NOT EXCEED THE MAXIMUM TORQUE RATING ON ALL BOLTS OF 20 FT-LBS.



WARNING:

FAILURE TO APPLY A SUITABLE LUBRICANT TO THE MATING SURFACES OF STAINLESS STEEL THREADED FASTENERS MAY CAUSE GALLING AND/OR SEIZING OF ASSEMBLY.

2.2 TOOLS REQUIRED

1. 9/16" & 3/4" Wrenches or Adjustable Wrench.
2. Drill Motor.
3. 17/32" drill bit.
4. Measuring Tape.



CAUTION:

CONTACT YOUR RGC® MARINE DEALER IF YOU HAVE ANY QUESTIONS.

2.3 HL5K-HL7K (48" & 60" Lifts) MAIN SUPPORT TUBE MOUNTING

2.3.1 HL5K-HL7K (48") lift only:

1. Refer to **Figures 2-1A**. Remove the liftarm extension tubes. These tubes will not be used.
2. Layout the holes shown in **figures 2-1A**. To aid in new hole location, align pivot plate (5) with existing liftarm hole.
3. Drill one additional 17/32" hole through each front & rear liftarm (4 total).

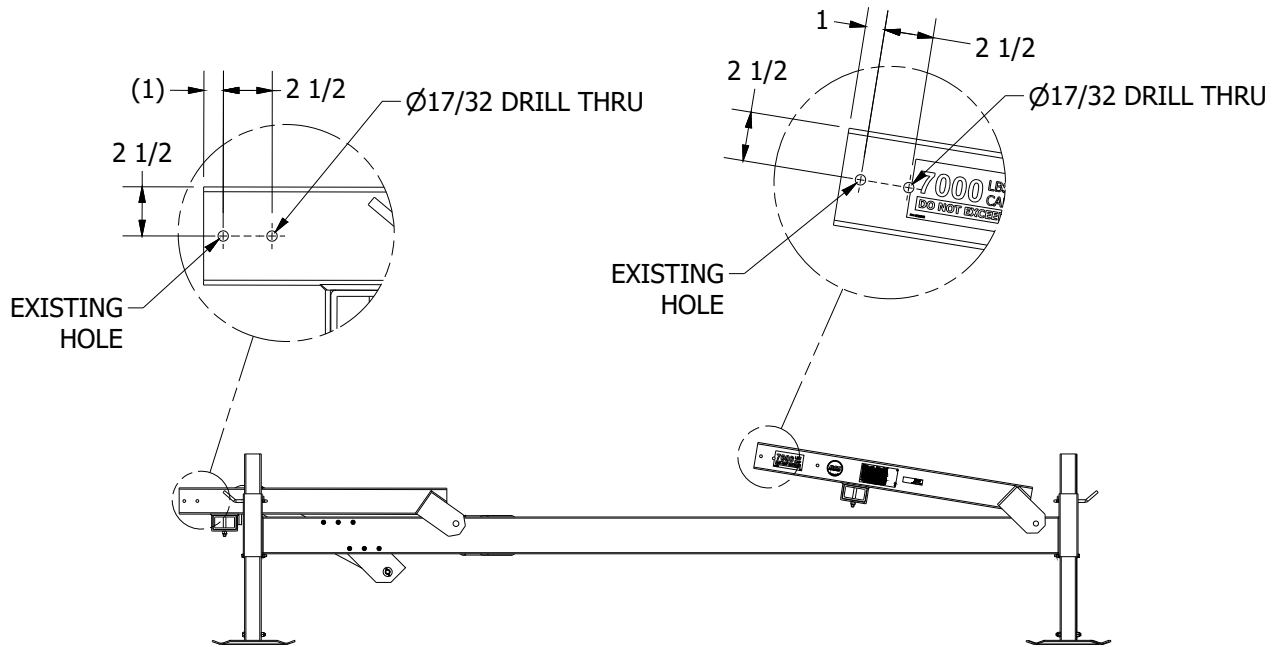


Figure 2-1A.
HL5K-HL7K (48" Lift only) Drilling Liftarms.

2.3.2 HL5K-HL7K (60") lift only:

1. **Refer to Figures 2-1B.** Layout the holes shown in **figures 2-1B.** To aid in new hole location, align pivot plate (5) with existing liftarm extension tube hole.
2. Drill one additional $17/32$ " hole through each front & rear extension tubes (4 total).

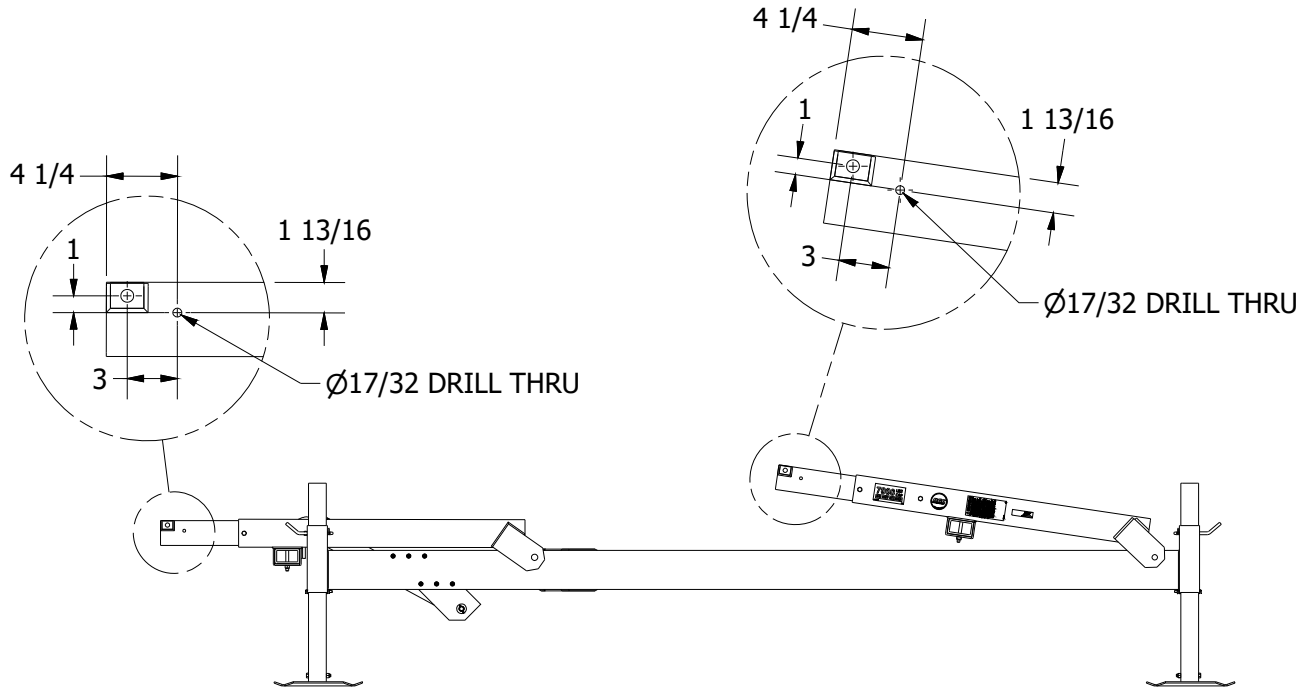


Figure 2-1B.
HL5K-HL7K (60" Lift only) Drilling Liftarm Extension Tubes.

2.4 HL5K-HL7K (48" & 60" Lifts) LIFTARM PIVOT PLATE MOUNTING

2.4.1 HL5K-HL7K (48") lift only:

1. Refer to Figure 2-2A. Attach two Liftarm Pivot Plates (5) to each liftarm tube using two each; hex screw (H) and locknut (L).
2. Securely tighten all fasteners.

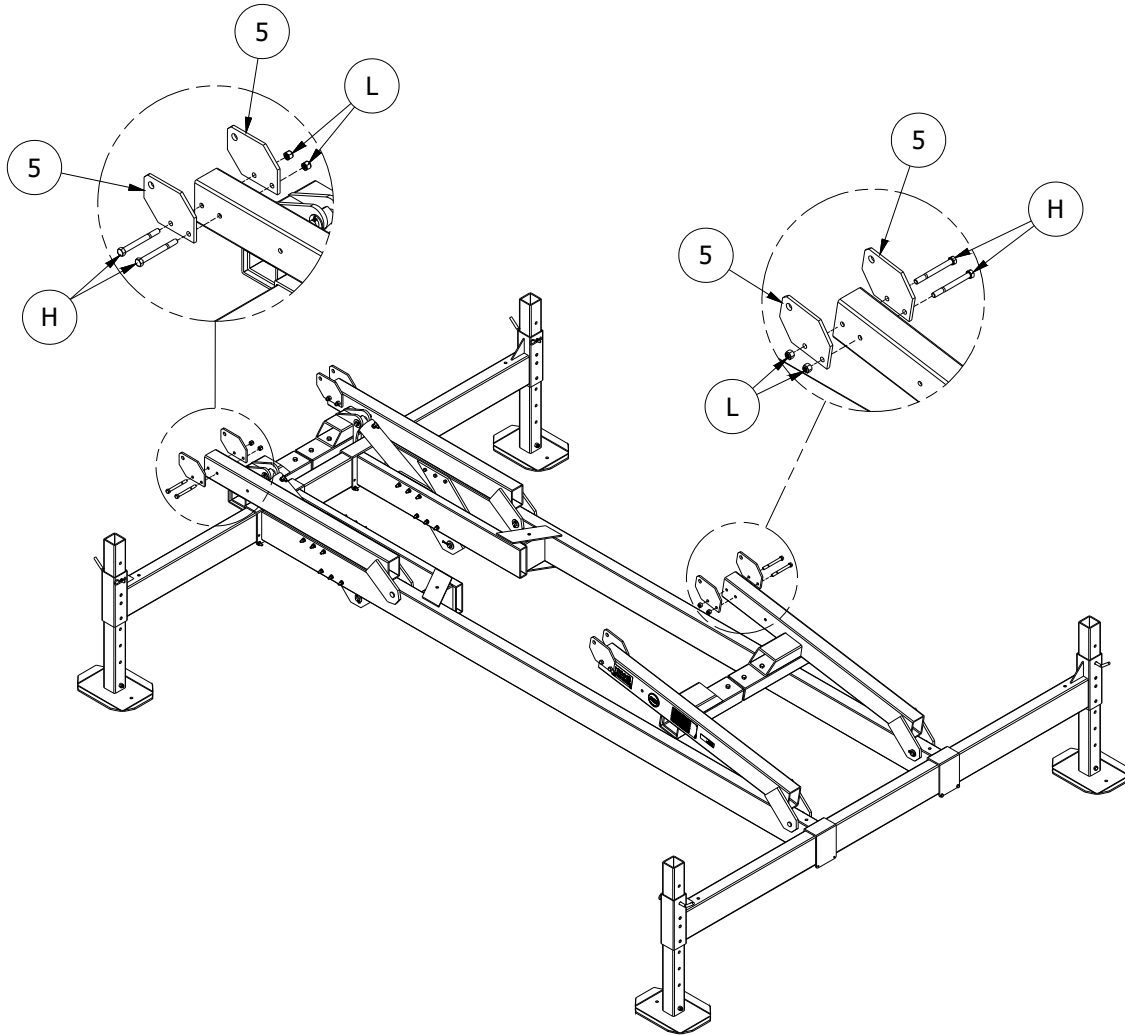


Figure 2-2A.
HL5K-HL7K (48" Lift only) Mounting Liftarm Pivot Plates.

2.4.2 HL5K-HL7K (60") lift only:

1. **Refer to Figure 2-2B.** Attach two Liftarm Pivot Plates (5) to each liftarm extension tube using one each; hex screw (M) , locknut (N), hex screw (H) , locknut (L), and two pivot plate spacers (9), one spacer under each plate.
2. Securely tighten all fasteners.

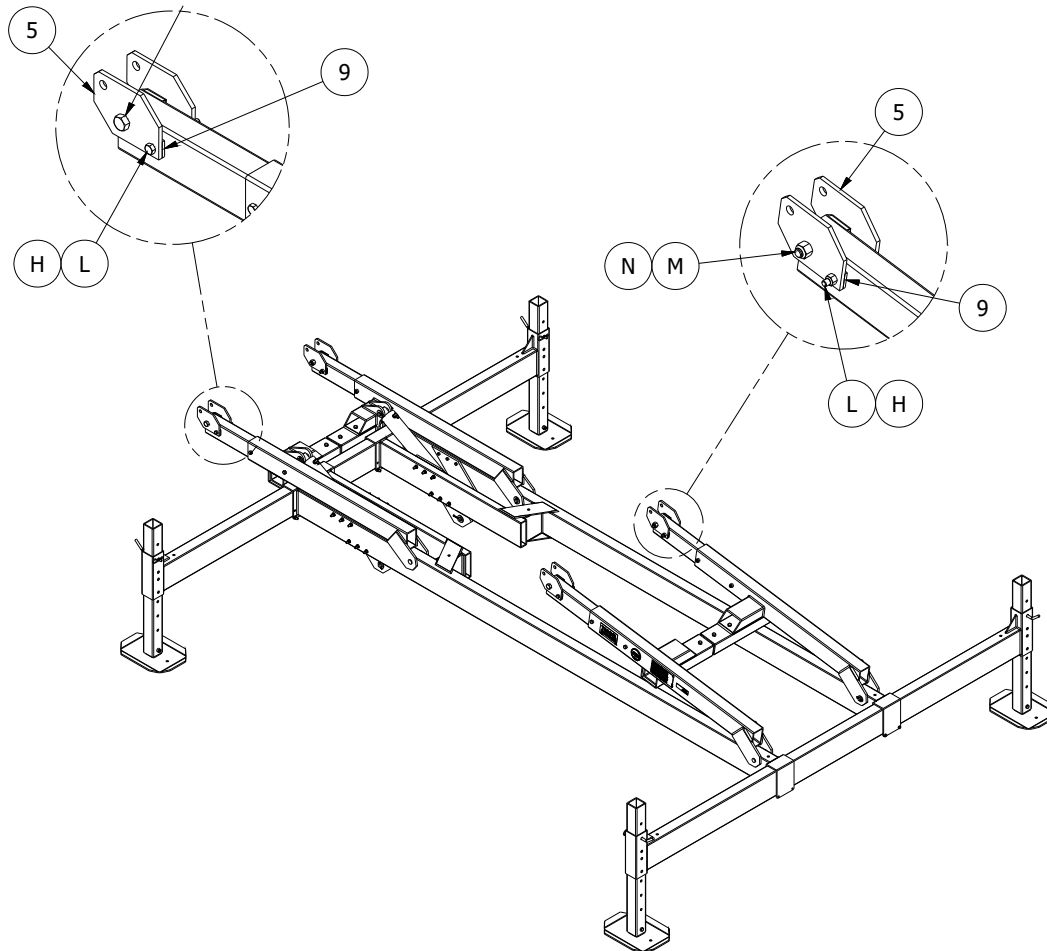


Figure 2-2B.
HL5K-HL7K (60" Lift only) Mounting Liftarm Pivot Plates.

2.5 HL5K-HL7K (48" & 60") P&T TOON MAIN SUPPORT TUBE MOUNTING

1. **Refer to Figure 2-3.** The following mounting hardware; clevis pins (D), cotter pins, polymer washers(3), and flat washers (K) are all included in the HL Lift Carton of Parts. All other items are included within this kit.
2. Position one P&T Toon main support tube (8), between the front and rear liftarm pivot plates (5). Insert one polymer bunk washer (3), between support tube and each pivot plate (4 total).
3. Slide clevis pin through pivot plate, polymer washer, support tube, polymer washer, and other pivot plate.
4. Place a flat washer (K) on both ends of clevis pin and secure both ends with a cotter pin.
5. Repeat on other end of support tube.
6. Repeat steps 2 thru 5 for other side of lift.

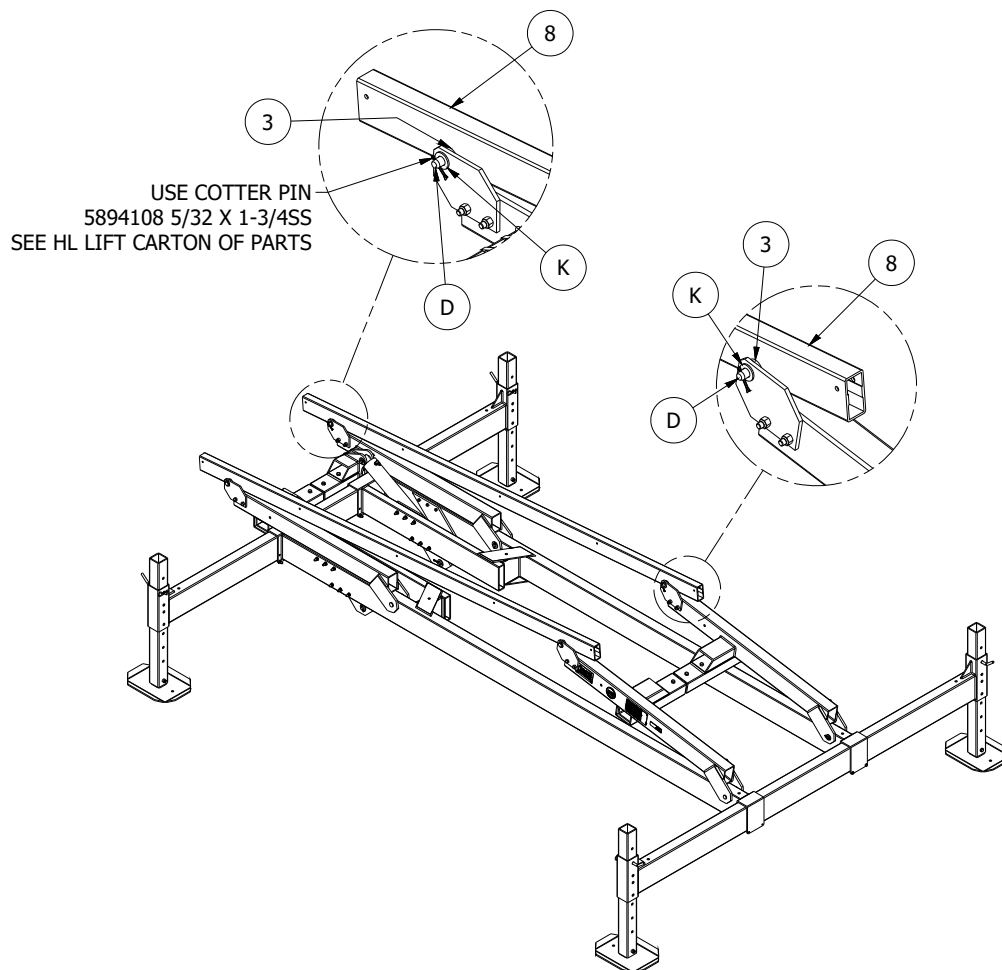


Figure 2-3.
HL5K-HL7K Main Support Tube Mounting

2.6 HL5K-HL7K (48" & 60") P/T TOON CROSS SUPPORT TUBE MOUNTING

1. **Refer to Figure 2-4.** Position one P&T Toon cross support tube (7), across both main support tubes, above each of the five through holes.
2. Position a cross tube mounting angle (4) between outside of main support tube and bottom of cross tube, using hex screw (G), and aluminum locknut (B).
3. Repeat for all ten locations. Secure all fasteners.

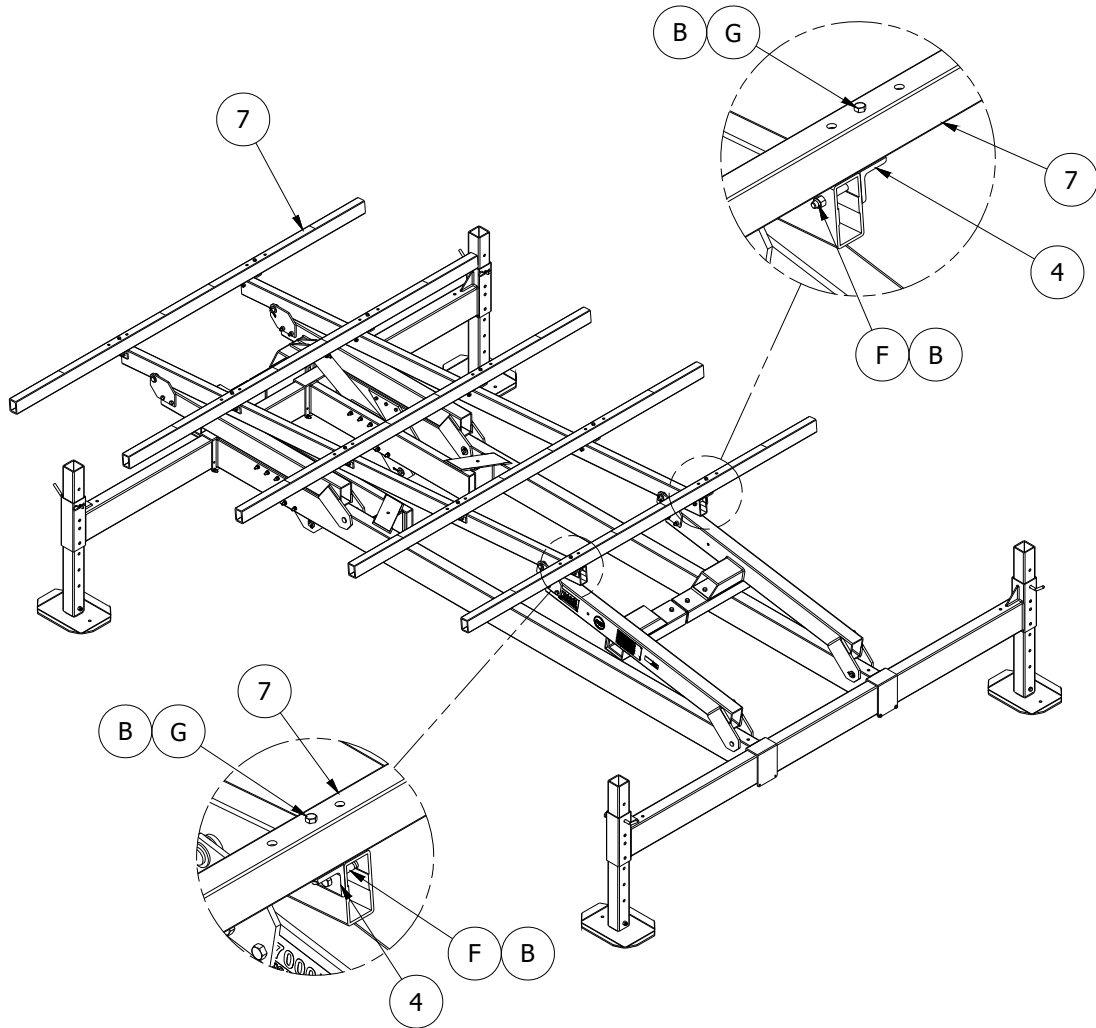


Figure 2-4.
HL5K-HL7K P/T Toon Cross Support Tubes

2.7 HL5-7K (48" & 60" Lift) ALUMINUM / VINYL P&T TOON CRADLE BUNK SUPPORT MOUNTING

2.7.1 HL5K-HL7K PONTOON CRADLE SUPPORT MOUNTING

1. Refer to Figure 2-5. Position one P&T Toon A/V cradle bracket (2), near end of a cross support tube.
2. Attach bracket using two hex screws (F), one two hole mounting plate (1), and two aluminum locknuts (B). **DO NOT TIGHTEN AT THIS TIME.**
3. Repeat step two for all other brackets. **DO NOT TIGHTEN AT THIS TIME.**

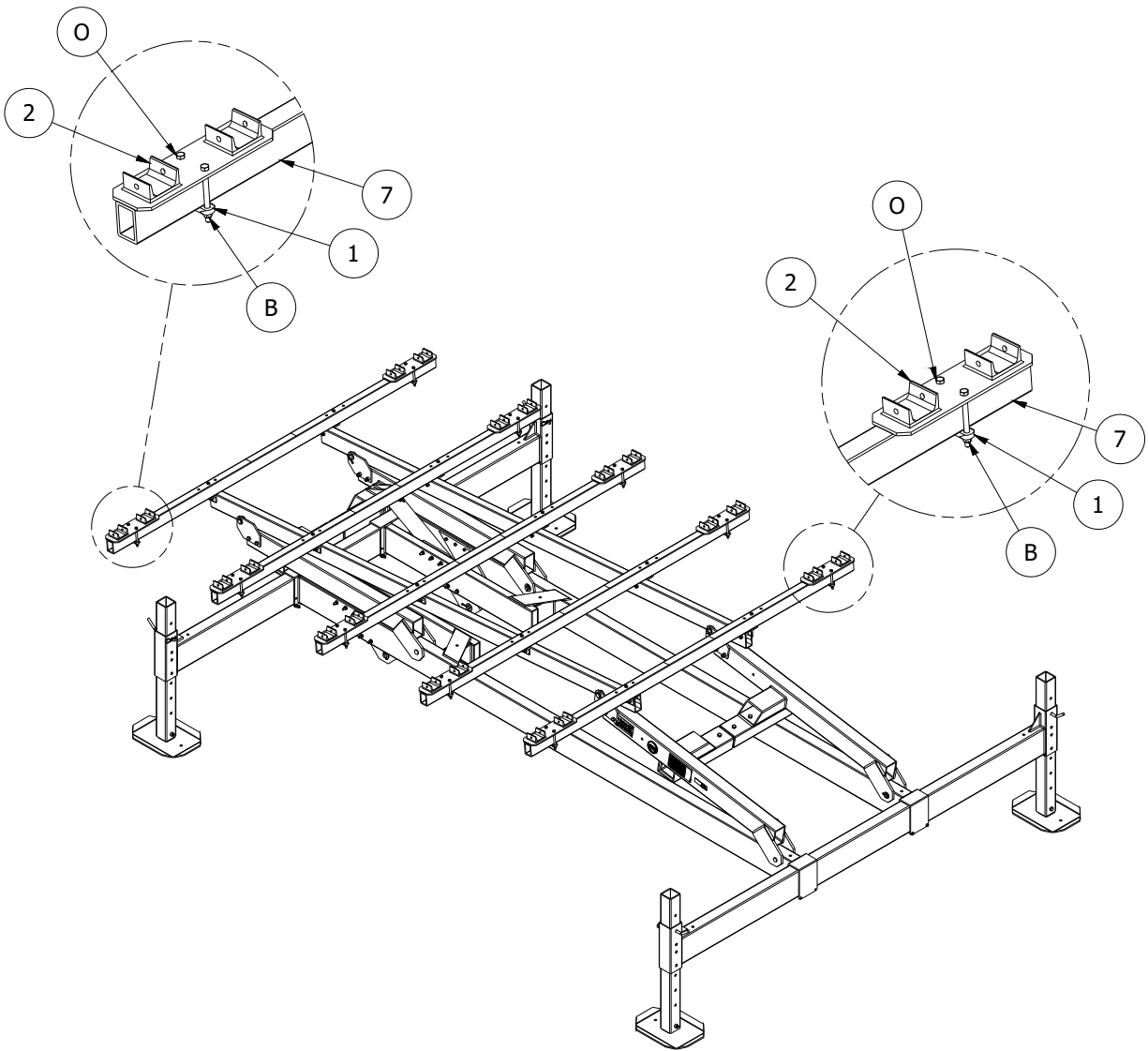


Figure 2-5.
HL5K-HL7K (48" & 60" Lift) Aluminum / Vinyl Pontoon Cradle Bunk Support Mounting

2.7.2 HL5K-HL7K TRITOON CRADLE SUPPORT MOUNTING

1. Refer to Figure 2-6. Position one P&T Toon A/V cradle bracket (2), near end of a cross support tube.
2. Attach bracket using two hex screws (F), one two hole mounting plate (1), and two aluminum locknuts (B). **DO NOT TIGHTEN AT THIS TIME.**
3. Repeat step two for all other brackets. **DO NOT TIGHTEN AT THIS TIME.**

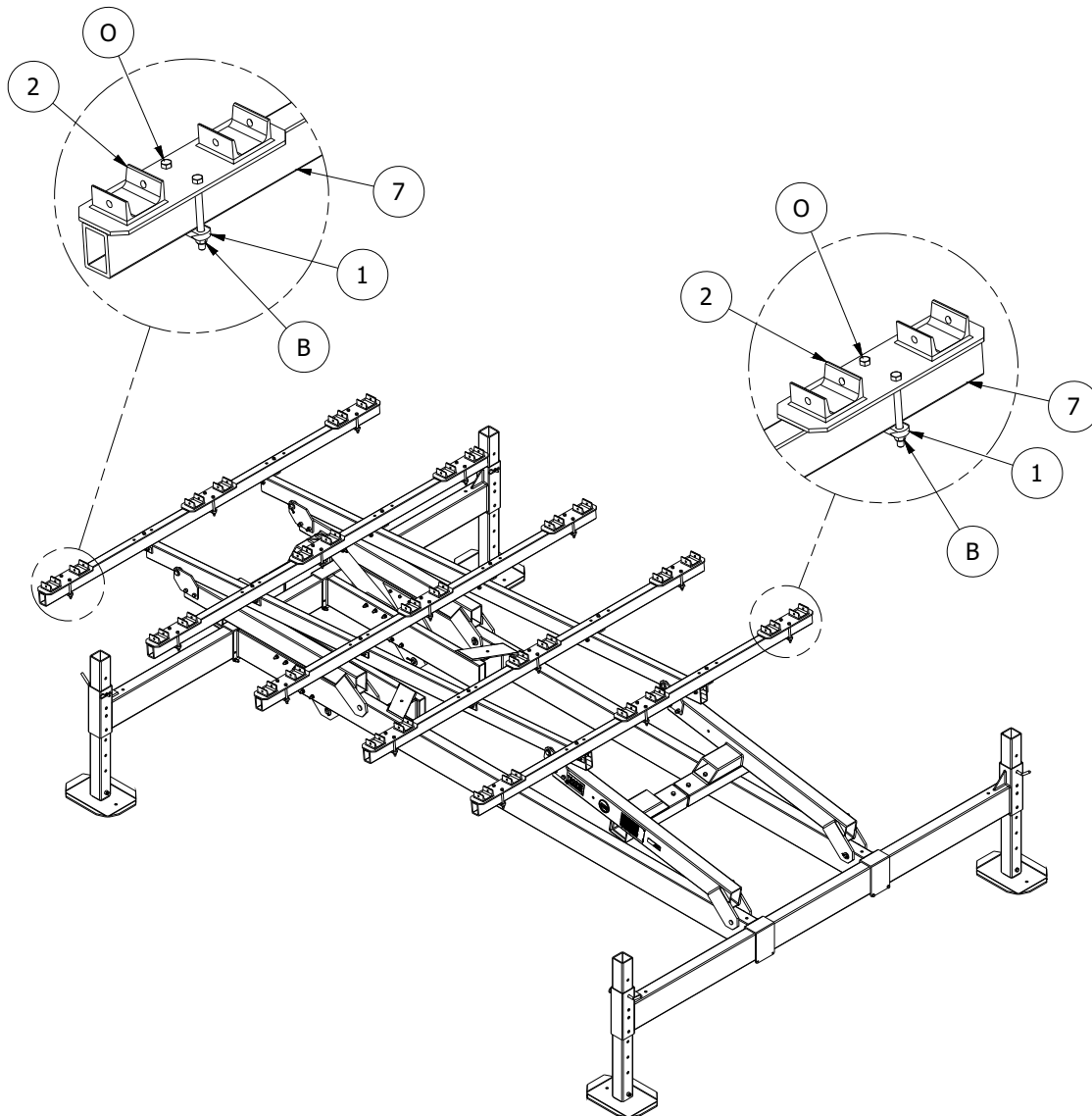


Figure 2-6.
HL5K-HL7K (48" & 60" Lift) Aluminum / Vinyl Tritoon Bunk Support Cradles

2.8 HL5K-HL7K (48" & 60" Lift) ALUMINUM / VINYL BUNKS

2.8.1 HL5K-HL7K PONTOON CRADLE SUPPORT MOUNTING

1. Refer to Figure 2-7. Position one P&T Toon A/V cradle bracket (2), near end of a cross support tube (7).
2. Loosely attach bracket using one, two hole plate (1), and two each hex screw (F), and hex lock nut (B). **DO NOT TIGHTEN AT THIS TIME.**
3. Repeat steps 1 and 2 for remaining nine brackets. **DO NOT TIGHTEN AT THIS TIME.**
4. Place an A/V Bunk (6) over the channels on one side of cradle brackets and align holes.
5. Loosely secure bunk using one each; hex screw (O), flat washer (J), lock washer (A), and hex nut (C) at each channel. **DO NOT TIGHTEN AT THIS TIME.**
6. Repeat steps 4 and 5 for other three bunks. **DO NOT TIGHTEN AT THIS TIME.**
7. Using boat trailer as a guide (or boat itself), measure pontoon spacing width required.
8. Position bunk cradles so that the boat will remain centered over the lifting arms.
9. Once cradles are in proper location securely fasten all cradle bracket and bunk mounting hardware. **Ensure all fasteners have been tightened.**

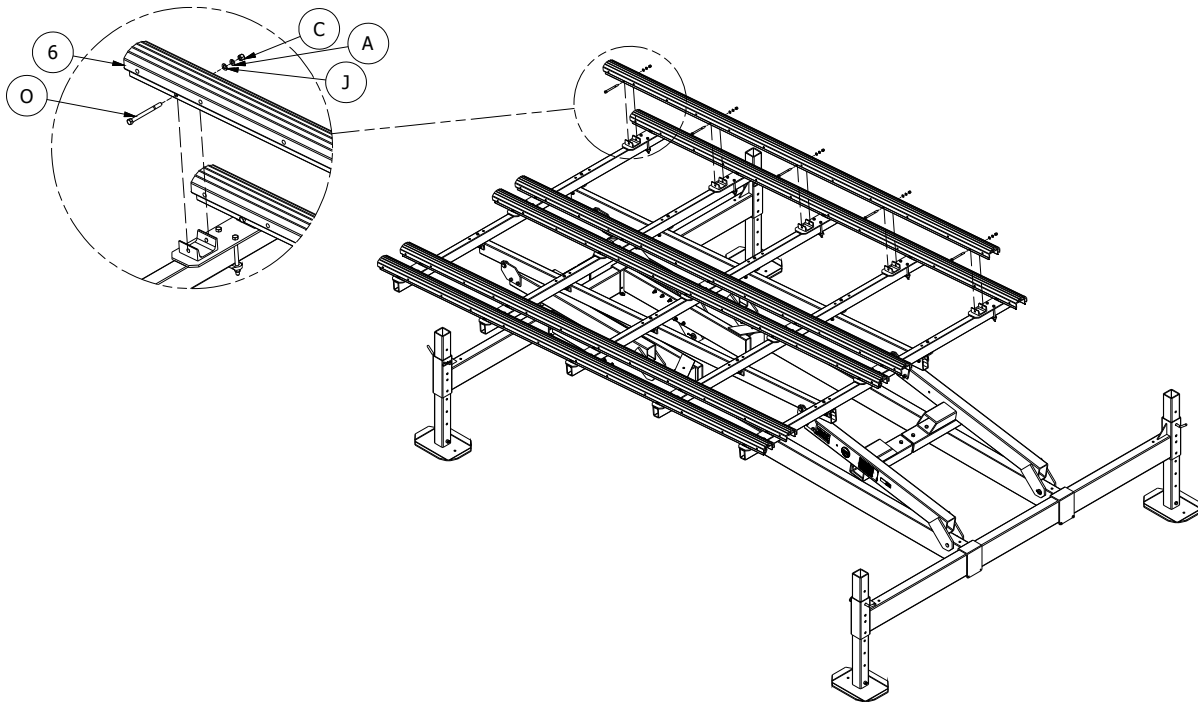


Figure 2-7.
HL5K-HL7K (48" & 60" Lift) Pontoon Aluminum/Vinyl Bunks

2.8.2 HL5K-HL7K TRITOON CRADLE SUPPORT MOUNTING

1. Refer to Figure 2-8. Position one P&T Toon A/V cradle bracket (2), near end of a cross support tube (7).
2. Loosely attach bracket using one, two hole plate (1), and two each hex screw (F), and hex lock nut (B). **DO NOT TIGHTEN AT THIS TIME.**
3. Repeat steps 1 and 2 for remaining nine end brackets as well as the five center brackets. **DO NOT TIGHTEN AT THIS TIME.**
4. Place an A/V Bunk (6) over the channels on one side of cradle brackets and align holes.
5. Loosely secure bunk using one each; hex screw (O), flat washer (J), lock washer (A), and hex nut (C) at each channel. **DO NOT TIGHTEN AT THIS TIME.**
6. Repeat steps 4 and 5 for other five bunks. **DO NOT TIGHTEN AT THIS TIME.**
7. Using boat trailer as a guide (or boat itself), measure tritoon spacing width required.
8. Position bunk cradles so that the boat will remain centered over the lifting arms.
9. Once cradles are in proper location securely fasten all cradle bracket and bunk mounting hardware. **Ensure all fasteners have been tightened.**

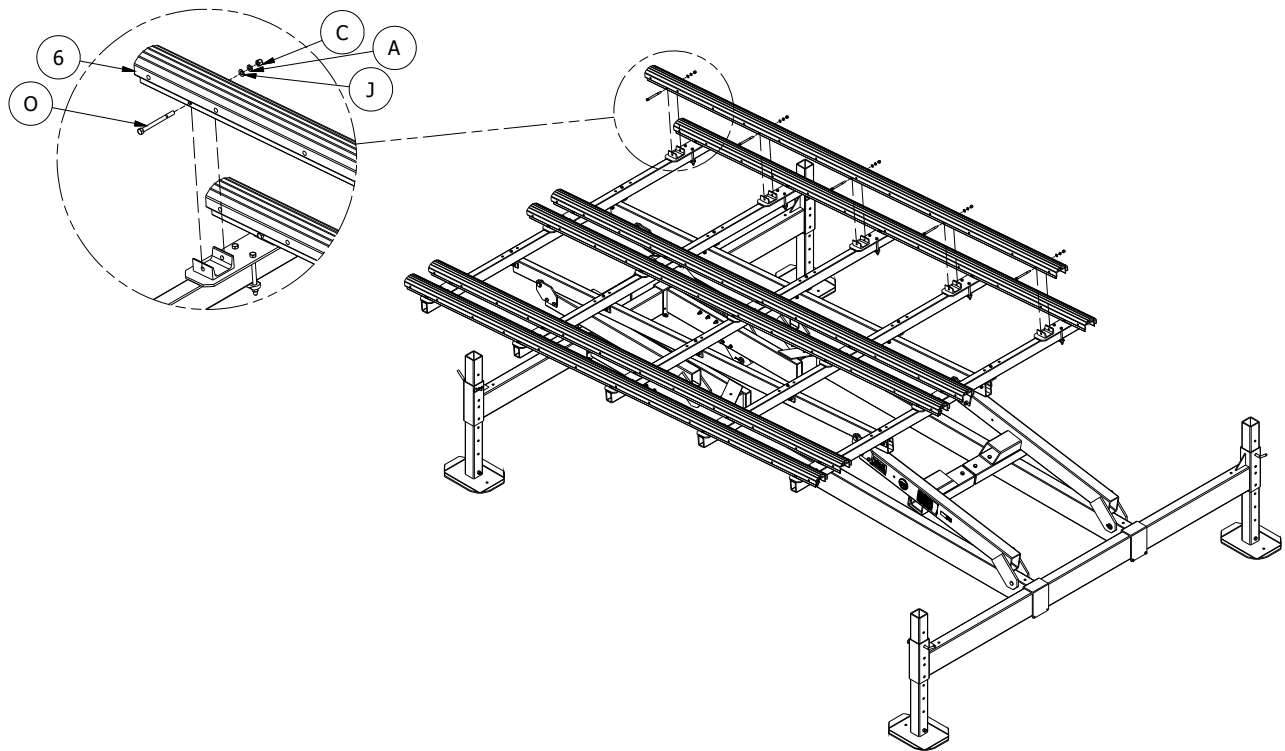


Figure 2-8.
HL5K-HL7K (48" & 60" Lift) Tritoon Aluminum Vinyl Bunks

3 PARTS LIST

3.1 HL5K-HL7K ALUMINUM / VINYL PONTOON KIT



WARNING:

FAILURE TO APPLY A SUITABLE LUBRICANT TO THE MATING SURFACES OF STAINLESS STEEL THREADED FASTENERS MAY CAUSE GALLING AND/OR SEIZING OF ASSEMBLY.

3.1.1 4197111 HL5K-HL7K (48") A/V PONTOON CRADLE BUNK KIT BLACK

Reference	Part Number	Quantity	Description
	4197220	1	HL5-7K A/V PONT BUNK BDL BLACK consisting of:
6	4197416	4	HL4-7K A/V P&T TOON BUNK ASSY BLACK
7	4113727	5	HL5-7K P&T TOON CROSS SUPT TUBE 100"
8	4113518	2	HL5-7K P&T TOON MAIN SUPT TUBE
	4107271	1	HL5-7K (48") A/V PONT BUNK COP consisting of:
1	3603835	10	2-HOLE PLATE 2"
2	4107696	10	HL P&T TOON A/V CRADLE MTG PLT
4	4113713	10	HL P&T TOON CROSS TUBE MTG ANGLE
5	4113719	8	HL5-9K(48") PLATFORM LIFTARM PIVOT PLATE
	4107373	1	HL5-7K (48") A/V PONT BUNK BOB consisting of:
A	5806243	20	WASHER SPLIT LOCK 3/8 SS
B	5840103	40	NUT HEX NYLOCK 3/8-16 ALUM
C	5840104	20	NUT HEX 3/8-16 ALUM
D	5894109	4	PIN, CLEVIS 3/4 X5 SS
F	5896255	10	HEX HEAD CAP SCREW 3/8-16 X 3 SS
G	5896259	10	HEX HEAD CAP SCREW 3/8-16 X 4 SS
H	5896294	8	HEX HEAD CAP SCREW 1/2-13 X 5 SS
J	5896406	40	WASHER FLAT SAE 3/8" SS
K	5896417	4	WASHER FLAT SAE 3/4" 300 SS
L	5897018	8	NUT HEX NYLOCK 1/2-13 SS/WAX
O	5896262	40	HEX HEAD CAP SCREW 3/8-16 X 4-1/2 SS

3.1.2 4197114 HL5K-HL7K (60") A/V PONTOON CRADLE BUNK KIT BLACK

Reference	Part Number	Quantity	Description
	4197220	1	HL5-7K A/V PONT BUNK BDL BLACK consisting of:
6	4197416	4	HL4-7K A/V P&T TOON BUNK ASSY BLACK
7	4113727	5	HL5-7K P&T TOON CROSS SUPT TUBE 100"
8	4113518	2	HL5-7K P&T TOON MAIN SUPT TUBE
	4107273	1	HL5-7K (60") A/V PONT BUNK COP consisting of:
1	3603835	10	2-HOLE PLATE 2"
2	4107696	10	HL P&T TOON A/V CRADLE MTG PLT
4	4113713	10	HL P&T TOON CROSS TUBE MTG ANGLE
5	4113719	8	HL5-9K(48") PLATFORM LIFTARM PIVOT PLATE
9	3408604	8	BOSS 17/32 HOLE (PIVOT PLATE SPACER)
	4107375	1	HL5-7K (60") A/V PONT BUNK BOB consisting of:
A	5806243	20	WASHER SPLIT LOCK 3/8 SS
B	5840103	40	NUT HEX NYLOCK 3/8-16 ALUM
C	5840104	20	NUT HEX 3/8-16 ALUM
D	5894109	4	PIN, CLEVIS 3/4 X5 SS
F	5896255	10	HEX HEAD CAP SCREW 3/8-16 X 3 SS
G	5896259	10	HEX HEAD CAP SCREW 3/8-16 X 4 SS
H	5896294	8	HEX HEAD CAP SCREW 1/2-13 X 5 SS
J	5896406	40	WASHER FLAT SAE 3/8" SS
K	5896417	4	WASHER FLAT SAE 3/4" 300 SS
L	5897018	4	NUT HEX NYLOCK 1/2-13 SS/WAX
M	5896182	4	HEX HEAD CAP SCREW 3/4-10 X 5 SS
N	5897014	4	NUT HEX NYLOCK 3/4-10 SS/WAX
O	5896262	40	HEX HEAD CAP SCREW 3/8-16 X 4-1/2 SS

3.2 HL5K-HL7K ALUMINUM / VINYL TRITOON KIT



WARNING:

FAILURE TO APPLY A SUITABLE LUBRICANT TO THE MATING SURFACES OF STAINLESS STEEL THREADED FASTENERS MAY CAUSE GALLING AND/OR SEIZING OF ASSEMBLY.

3.2.1 4197129 HL5K-HL7K (48") A/V TRITOON CRADLE BUNK KIT BLACK

Reference	Part Number	Quantity	Description
	4197229	1	HL5-7K A/V TRIT BUNK BDL BLACK consisting of:
6	4197416	6	HL4-7K A/V P&T TOON BUNK ASSY BLACK
7	4113727	5	HL5-7K P&T TOON CROSS SUPT TUBE 100"
8	4113518	2	HL5-7K P&T TOON MAIN SUPT TUBE
	4107272	1	HL5-7K (48") A/V TRIT BUNK COP consisting of:
1	3603835	15	2-HOLE PLATE 2"
2	4107696	15	HL P&T TOON A/V CRADLE MTG PLT
4	4113713	10	HL P&T TOON CROSS TUBE MTG ANGLE
5	4113719	8	HL5-9K(48") PLATFORM LIFTARM PIVOT PLATE
	4107374	1	HL5-7K (48") A/V TRIT BUNK BOB consisting of:
A	5806243	30	WASHER SPLIT LOCK 3/8 SS
B	5840103	50	NUT HEX NYLOCK 3/8-16 ALUM
C	5840104	30	NUT HEX 3/8-16 ALUM
D	5894109	4	PIN, CLEVIS 3/4 X5 SS
F	5896255	10	HEX HEAD CAP SCREW 3/8-16 X 3 SS
G	5896259	10	HEX HEAD CAP SCREW 3/8-16 X 4 SS
H	5896294	8	HEX HEAD CAP SCREW 1/2-13 X 5 SS
J	5896406	60	WASHER FLAT SAE 3/8" SS
K	5896417	4	WASHER FLAT SAE 3/4" 300 SS
L	5897018	8	NUT HEX NYLOCK 1/2-13 SS/WAX
O	5896262	60	HEX HEAD CAP SCREW 3/8-16 X 4-1/2 SS

3.2.2 4197131 HL5K-HL7K (60") A/V TRITON CRADLE BUNK KIT BLACK

Reference	Part Number	Quantity	Description
	4197229	1	HL5-7K A/V TRIT BUNK BDL BLACK consisting of:
6	4197416	6	HL4-7K A/V P&T TOON BUNK ASSY BLACK
7	4113727	5	HL5-7K P&T TOON CROSS SUPT TUBE 100"
8	4113518	2	HL5-7K P&T TOON MAIN SUPT TUBE
	4107274	1	HL5-7K (60") A/V TRIT BUNK COP consisting of:
1	3603835	15	2-HOLE PLATE 2"
2	4107696	15	HL P&T TOON A/V CRADLE MTG PLT
4	4113713	10	HL P&T TOON CROSS TUBE MTG ANGLE
5	4107796	8	HL4-9K(60") PLATFORM LIFTARM PIVOT PLATE
9	3408604	8	BOSS 17/32 HOLE (PIVOT PLATE SPACER)
	4107376	1	HL5-7K (60") A/V TRIT BUNK BOB consisting of:
A	5806243	30	WASHER SPLIT LOCK 3/8 SS
B	5840103	50	NUT HEX NYLOCK 3/8-16 ALUM
C	5840104	30	NUT HEX 3/8-16 ALUM
D	5894109	4	PIN, CLEVIS 3/4 X5 SS
F	5896255	10	HEX HEAD CAP SCREW 3/8-16 X 3 SS
G	5896259	10	HEX HEAD CAP SCREW 3/8-16 X 4 SS
H	5896294	4	HEX HEAD CAP SCREW 1/2-13 X 5 SS
J	5896406	60	WASHER FLAT SAE 3/8" SS
K	5896417	4	WASHER FLAT SAE 3/4" 300 SS
L	5897018	4	NUT HEX NYLOCK 1/2-13 SS/WAX
M	5896182	4	HEX HEAD CAP SCREW 3/4-10 X 5 SS
N	5897014	4	NUT HEX NYLOCK 3/4-10 SS/WAX
O	5896262	60	HEX HEAD CAP SCREW 3/8-16 X 4-1/2 SS

TWO YEAR LIMITED WARRANTY

Reimann & Georger Corporation Marine Products

This product is warranted by RGC® Marine Products to the original purchaser to be free from defects in material and workmanship under normal use for a period of two years from the date of purchase.

During the warranty period, and upon proof of purchase, the product will be repaired or replaced (with the same or similar model) at our option, without charge for either parts or labor when serviced at RGC® Marine Products.

Upon completion of repair, the unit will be returned to the customer freight prepaid. The warranty will not apply to this product if it has been misused, abused, or altered.

NEITHER THIS WARRANTY OR ANY OTHER WARRANTY, EXPRESS OR IMPLIED, INCLUDING IMPLIED WARRANTIES OF MERCHANTABILITY, SHALL EXTEND BEYOND THE WARRANTY PERIOD. NO RESPONSIBILITY IS ASSUMED FOR ANY INCIDENTAL OR CONSEQUENTIAL DAMAGES. SOME STATES DO NOT ALLOW EXCLUSION OR LIMITATION OF INCIDENTAL OR CONSEQUENTIAL DAMAGES, SO THE ABOVE LIMITATIONS OR EXCLUSIONS MAY NOT APPLY TO YOU.

This warranty gives you specific legal rights, and you may also have other rights which vary from state to state.