



HL WHEEL KIT INSTRUCTIONS

(Applies to P/Ns 4100990 & 4101990)

**REIMANN & GEORGER CORPORATION
MARINE PRODUCTS
P/N 6114130**

**BUFFALO, NY
04/11/18**

TABLE OF CONTENTS

CHAPTER	TITLE	PAGE
1	SAFETY	1
1.1	Introduction	1
1.2	Safety Definitions	1
1.3	Equipment Safety Labels	1
1.4	Equipment And Personnel Safety	1
1.5	Installation Safety	2
1.6	Operating Safety	2
2	SPECIFICATIONS	3
2.1	HL.....	3
2.2	HL XL	4
3	INSTALLATION AND SETUP	5
3.1	Pre-Installation Checks	5
3.2	Wheel Kit Installation.....	5
3.2.1	HL Wheel Kit Assembly.....	5
3.2.2	HL XL Wheel Kit Assembly	5
3.3	Moving Lift To Operating Position	6
3.4	Removing The Wheel Kits.....	6
3.4.1	Removing The Wheel Kit Axle And Wheel	6
3.4.2	Removing The Wheel Kit Mounting Bracket And Mounting Plate	6
4	PARTS LIST	7
4.1	4100990 HL Wheel Kit	7
4.2	4101990 HL XL Wheel Kit	7

LIST OF FIGURES

FIGURE	DESCRIPTION	PAGE
2-1	HL Wheel Mounting Bracket & Mounting Plate	3
2-2	HL XL Wheel Mounting Bracket & Mounting Plate.....	4
4-1	HL Wheel Kit (old style)	8
4-2	HL XL Wheel Kit (old style).....	9
4-3	HL5K & HL9K Wheel kit (new style).....	10
4-	HL7K Wheel kit (new style).....	11

1 SAFETY

1.1 INTRODUCTION

Your Reimann & Georger Corporation Marine Products Hydraulic Lift Wheel Kit has been engineered to provide off-season portability and long term economics. However, even well designed and well-built products can malfunction or become hazardous in the hands of an inexperienced and/or untrained installer. Therefore, read this manual and related equipment manuals thoroughly before operating your lift to provide maximum safety for all operating personnel, and to get the maximum benefit from your equipment.



WARNING:

DO NOT INSTALL WHEEL KIT WITHOUT STUDYING THIS ENTIRE MANUAL AND RELATED MANUALS. FAILURE TO DO THIS CAN RESULT IN SERIOUS PERSONAL INJURY AND/OR EQUIPMENT DAMAGE. CONTACT YOUR RGC® MARINE DEALER IF YOU HAVE ANY QUESTIONS.

1.2 SAFETY DEFINITIONS

A safety message alerts you to potential hazards that could hurt you or others or cause property damage. The safety messages or signal words for product safety signs are **DANGER**, **WARNING**, and **CAUTION**. Each safety message is preceded by a safety alert symbol and is defined as follows:

DANGER: Indicates an imminently hazardous situation that, if not avoided, **will** cause death or serious injury. This safety message is limited to the most extreme situations.

WARNING: Indicates a potentially hazardous situation which, if not avoided, **could** result in death or serious injury.

CAUTION: Indicates a potentially hazardous situation which, if not avoided, **may** result in minor or moderate injury. It may also be used to alert against unsafe practices and property-damage-only accidents.

1.3 EQUIPMENT SAFETY LABELS

These labels warn you of potential hazards that could cause injury. Read them carefully. If a label comes off or becomes illegible, contact a Reimann & Georger Corporation dealer for a free replacement.

1.4 EQUIPMENT AND PERSONNEL SAFETY

1. Do not allow persons other than authorized service personnel to repair any part of this equipment.
2. Do not exceed the rated maximum lifting capacity of this equipment.
3. Never try lifting anything other than a boat with this equipment.
4. Never allow people in the boat any time it is suspended above the water on the platform or when the lift is in use.
5. Do not stand or walk on the loading platform while it is in any raised position.
6. Do not allow anyone to swim or play under, near or on the lift at any time. Raise the bunks out of the water when leaving the lift unattended to allow swimmers to see its location.
7. Never use the lift to hang or store any auxiliary equipment such as boating hardware.
8. Never operate the lift during an electrical storm.

1.5 INSTALLATION SAFETY

1. Do not weld or otherwise modify the wheel kit. Such alterations may weaken the structural integrity of the lift and void the warranty.
2. All lifting accessories such as pontoon brackets, pivoting bunks, and guide-ons, must be commercially manufactured, and be properly maintained and installed.
3. Insure that the frame is level and square.
4. The following precautions must be observed when lifting any part of this equipment:
 - a. Be sure of your footing.
 - b. Bend your knees and lift with your legs.
 - c. Hold the equipment section close to your body when lifting.
 - d. Use material handling equipment for heavy assemblies

1.6 OPERATING SAFETY

1. Before allowing anyone to operate the lift, be certain they fully understand the proper operating procedure.
2. Completely remove any user or dealer installed locking devices before operating the lift.
3. Ensure the center of gravity of the boat is between forward load tube and rear footplates.
4. Do not try lifting or launching your boat in rough water conditions. This can damage your boat and/or the lift.
5. The boat must be stored with the lift in the over center position.
6. Keep people and pets clear during operation of the lift.
7. Keep all clothing and all body parts clear of moving parts.
8. Never adjust or service the lift during operation or while connected to the control box.
9. Completely lower the platform before performing any type of maintenance or repair.
10. Never allow anybody to work in or on the boat when it is suspended above the water on the lift.
11. Do not operate the lift when under the influence of drugs, alcohol, or medication.

2 SPECIFICATIONS

HL Wheel kits are used for HL5K, HL7K & HL9K lifts. See the chart below for the wheel kit to fit your lift.
Note: The old style HL lifts were built before 2006, the new style lift were built after 2005.

Model	Wheel Kit
HL50116 (old style)	4100990
HL50124 (old style)	4100990
HL70124 (old style)	4100990
HL50116XL (old style)	4101990
HL50124XL (old style)	4101990
HL70124XL (old style)	4101990
HL50120 48" LIFT (new style)	4100990
HL50120XL 60" LIFT (new style)	4100990
HL70120 48" LIFT (new style)	4101990
HL70120XL 60" LIFT (new style)	4101990
HL90120 48" LIFT (new style)	4101990
HL90120XL 60" LIFT (new style)	4101990

2.1 4100990 HL Wheel Kit

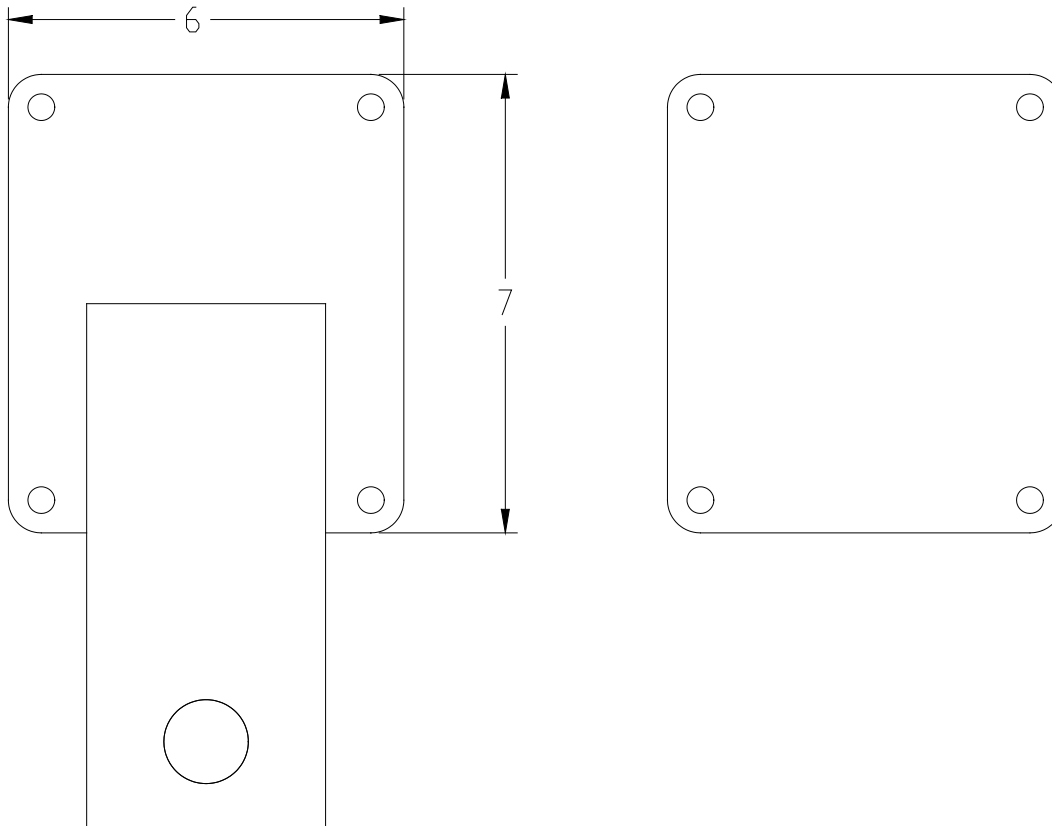
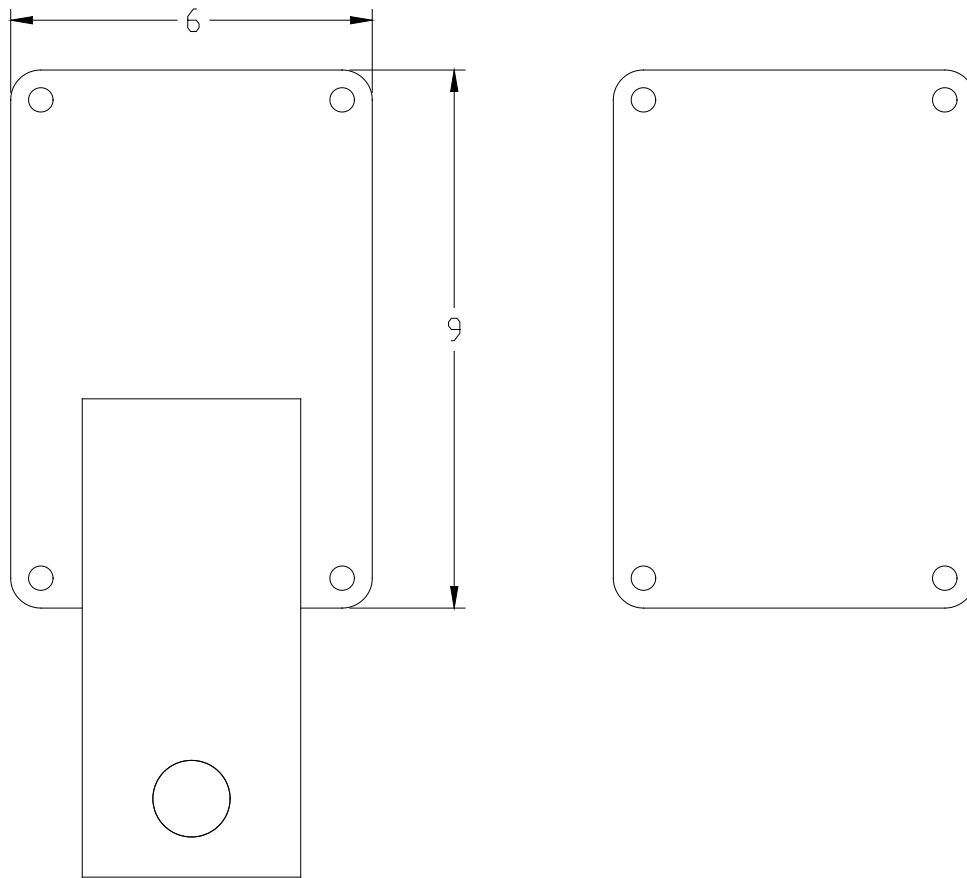


Figure 2-1
HL Wheel Mounting Bracket and Mounting Plate

2.2 4101990 Wheel Kit



**Figure 2-2
HL XL Wheel Mounting Bracket and Mounting Plate**

3 INSTALLATION AND SETUP

3.1 PRE-INSTALLATION CHECKS

1. Do not install wheel kit on the lift without reading both this manual and your hydraulic lift manual. Failure to do so could result in personal injury and/or equipment damage.
2. Do not install wheel kit without first inspecting and replacing any damaged or defective parts.
3. Do not weld or otherwise modify any part of the wheel kit. Such alterations may weaken the structural integrity of the wheel kit and/or the lift and void the warranty.
4. Make sure the area around the lift is a level surface and free of debris and obstructions that may damage or be damaged by the lift during installation of the wheel kit.



WARNING:

DO NOT INSTALL THE WHEEL KIT WITH THE WEIGHT OF THE BOAT ON THE LIFT. THIS CAN CAUSE PERSONAL INJURY AND/OR EQUIPMENT DAMAGE.

3.2 WHEEL KIT INSTALLATION

3.2.1 4100990 HL WHEEL KIT ASSEMBLY

1. Refer to Figures 4-1 or 4-3 for HL Wheel Kit Assembly drawing.
2. Extend and lock extension legs to raise the side frame member, #A, at least 18 in. off the ground.
3. Loosely sandwich frame member #A between the wheel mounting bracket, #3 and mounting plate, #4, using the nut (#5), bolt (#8), flat washer (#7) and lock washer (#6).
4. Slide #3 and #4 approximately 26 in. from the rear leg extension, this is approximately the center of gravity. The center of gravity will vary from lift to lift and depending on bunk style, whether bunks are on or off, how much oil is in the cylinders, sizes of the extension legs, etc.
5. After #3 and #4 have been moved to the proper location, tighten the hardware down and repeat on other side.
6. Next, assemble the wheel, #1, to the axle, #2, with the lug nuts, #10 and tighten.
7. After the wheel and axle have been assembled; slide the axle through the hole on the wheel mounting bracket, #3 and insert pin, #9, through the hole in the axle.

3.2.2 4101990 HL WHEEL KIT ASSEMBLY

1. Refer to Figure 4-2 or 4-4 for HL Wheel Kit Assembly drawing.
2. Extend and lock extension legs to raise the side frame member, #A, at least 18 in. off the ground.
3. Loosely sandwich frame member #A between the wheel mounting bracket, #3 and mounting plate, #4, using the nut (#5), bolt (#8), flat washer (#7) and lock washer (#6).
4. Slide #3 and #4 approximately 26 in. from the rear leg extension, this is approximately the center of gravity. The center of gravity will vary from lift to lift and depends on bunk style, bunk on or off, oil in the cylinders, size of extension legs, etc.
5. After #3 and #4 have been moved to the proper location, tighten the hardware down and repeat on other side.
6. Next, assemble the wheel, #1, to the axle, #2, with the lug nuts, #10 and tighten.

7. After the wheel and axle have been assembled, slide the axle through the hole on the wheel mounting bracket, #3 and insert pin #9 through the hole in the axle.

3.3 MOVING LIFT TO OPERATING POSITION

1. Before moving lift to operating position, insure the completed wheel kit assembly appears as shown in **Figure 4-1, Figure 4-2, Figure 4-3 or Figure 4-4** and all hardware is securely fastened.
2. After making sure the wheel kit is properly attached, raise the extension legs completely up so the wheels will be in contact with the ground. While doing this make sure the lift does not roll out of control.
3. After the wheels are on the ground the lift can be rolled to the point of operation; however, while moving the assembled lift into position, keep control of the lift and make sure it doesn't roll out of control.
4. While moving the lift do not push or pull on the front or rear frame members. Use only the side frame members, #A, to maneuver lift into position.



WARNING:

THE HYDARLIC LIFT WHEEL KIT IS STRICTLY DESIGNED FOR OFF ROAD USE ONLY. IT IS NOT DESIGNED TO BE MANUEVERED BY ANY POWERED VEHICLE.



CAUTION:

DO NOT PUSH OR PULL THE LIFT FROM THE FRONT OR REAR FRAME MEMBERS. USE THE SIDE FRAME MEMBERS TO MANEUVER LIFT INTO POSITION.

3.4 REMOVING THE WHEEL KITS

Once the lift is in the position of operation, the wheel and axle assemblies need to be removed. They **can not** stay on the lift during the season. If the side frame, #A, is greater than 6 in. off the bottom of the body of water, the wheel mounting bracket and mounting plate can stay on the boatlift during the season. If there is less than 6 in. of water the wheel mounting bracket and mounting plate must be removed also.

3.4.1 REMOVING THE WHEEL KIT AXLE AND WHEEL

1. The wheel and axle assembly can be removed by first extending the extension legs to raise the wheel kit off of the ground.
2. Once the wheels are off the ground the hairpin pin can be removed from the backside of the axle.
3. Then the axle can be pulled out of the wheel mounting bracket and stored in a dry, room temperature environment.

3.4.2 REMOVING THE WHEEL KIT MOUNTING BRACKET AND MOUNTING PLATE

1. Once the wheel and axle has been removed, mark the location of the wheel brackets for future reference. The bracket can now be removed by removing the four bolts that hold the wheel-mounting bracket to the mounting plate.
2. The wheel mounting bracket and mounting plate can be stored with the tire and axle for the off season.



CAUTION:

INSURE LIFT IS SQUARE AND LEVEL TO PREVENT PLATFORM BINDING AND/OR EQUIPMENT DAMAGE.

4 PARTS LISTS

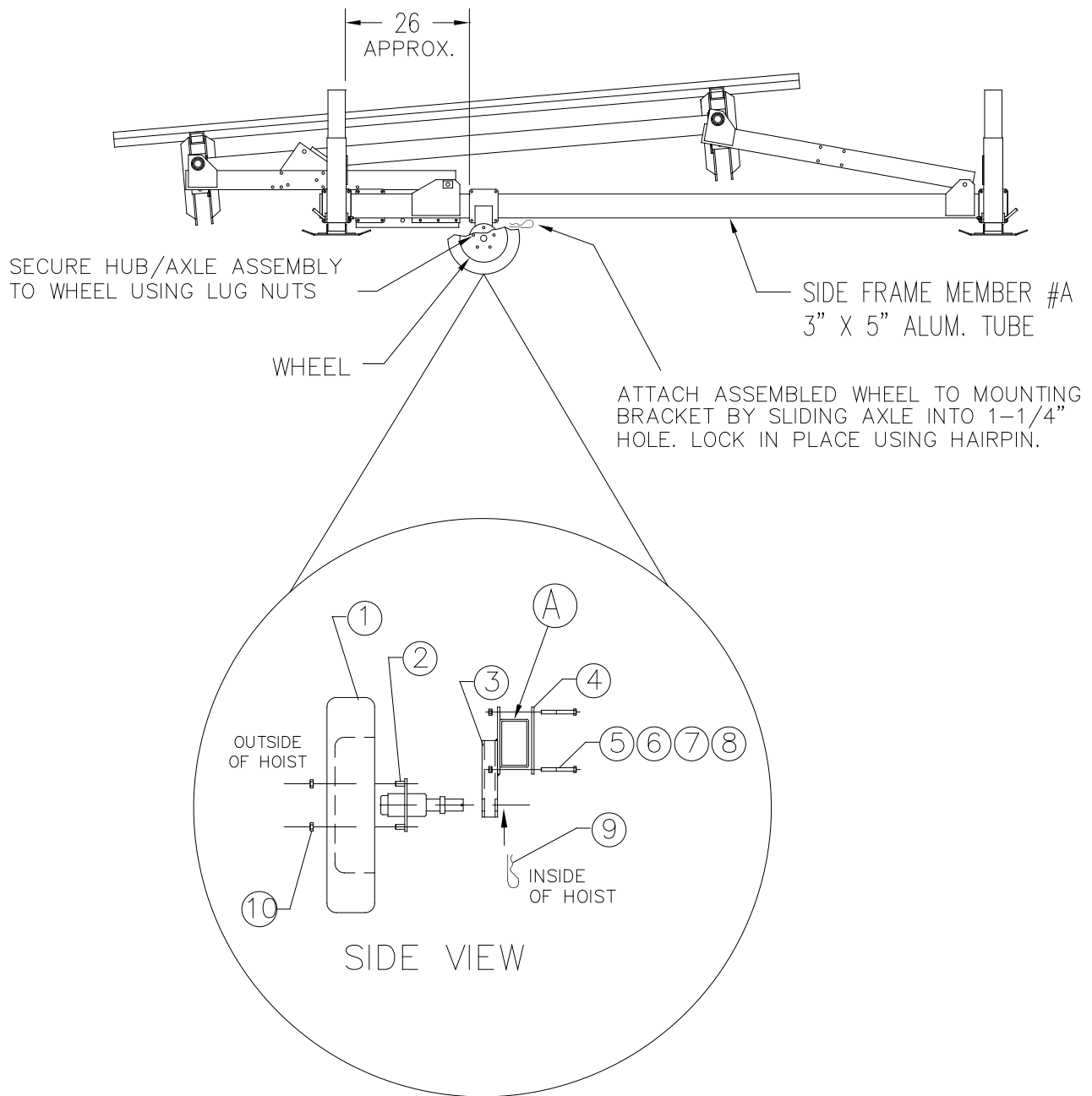
Each reference number in the following parts lists can be matched with the reference number shown in the written instructions in Chapter 3, Installation and Setup.

4.1 4100990 HL WHEEL KIT

REF #	PART #	QTY	DESCRIPTION
1	7603647	2	15" WHEEL
2	7603425	2	WHEEL HUB WITH STUB AXLE
3	4100523	2	HL WHEEL MOUNTING BRACKET
4	4100250	2	HL 6" X 7" MOUNTING PLATE
5	5896377	8	3/8" STAINLESS STEEL HEX NUT
6	5806243	8	3/8" STAINLESS STEEL LOCK WASHER
7	5896406	8	3/8" STAINLESS STEEL FLAT WASHER
8	5896259	8	3/8" x 4" STAINLESS STEEL HEX HEAD CAP SCREW
9	5800387	2	HAIRPIN 3/16" X 3 1/4"
10		10	LUG NUTS (SUPPLIED WITH WHEEL HUB/STUB AXLE)

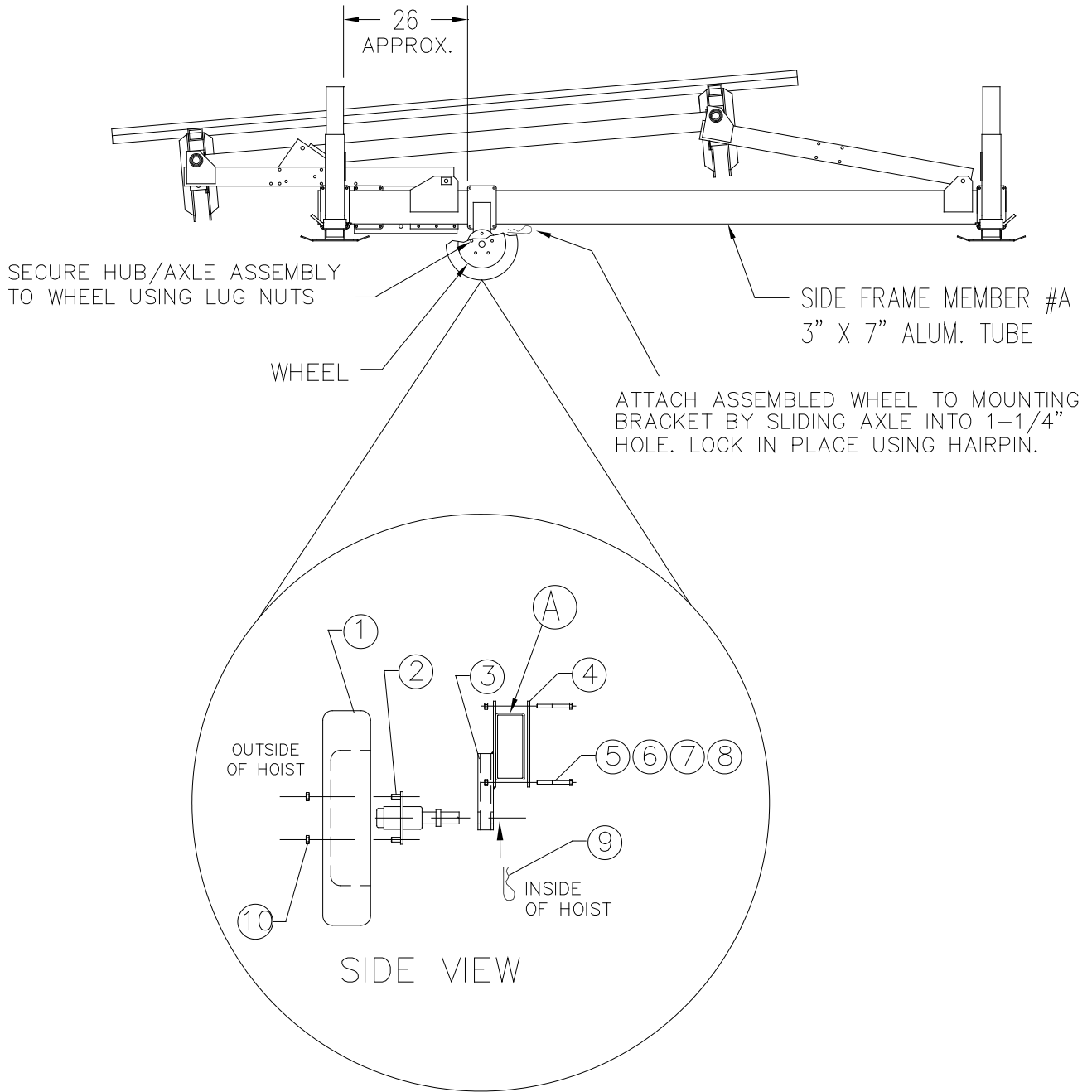
4.2 4101990 HL WHEEL KIT

REF #	PART #	QTY	DESCRIPTION
1	7603647	2	15" WHEEL
2	7603425	2	WHEEL HUB WITH STUB AXLE
3	4101523	2	HL XL WHEEL MOUNTING BRACKET
4	4101250	2	HL 6" X 9" MOUNTING PLATE
5	5896377	8	3/8" STAINLESS STEEL HEX NUT
6	5806243	8	3/8" STAINLESS STEEL LOCK WASHER
7	5896406	8	3/8" STAINLESS STEEL FLAT WASHER
8	5896259	8	3/8" x 4" STAINLESS STEEL HEX HEAD CAP SCREW
9	5800387	2	HAIRPIN 3/16" X 3 1/4"
10		10	LUG NUTS (SUPPLIED WITH WHEEL HUB/STUB AXLE)



OFF ROADWAY USE ONLY

Figure 4-1.
HL Wheel Kit (old style lifts)



OFF ROADWAY USE ONLY

Figure 4-2.
HL XL Wheel Kit (old style lifts)

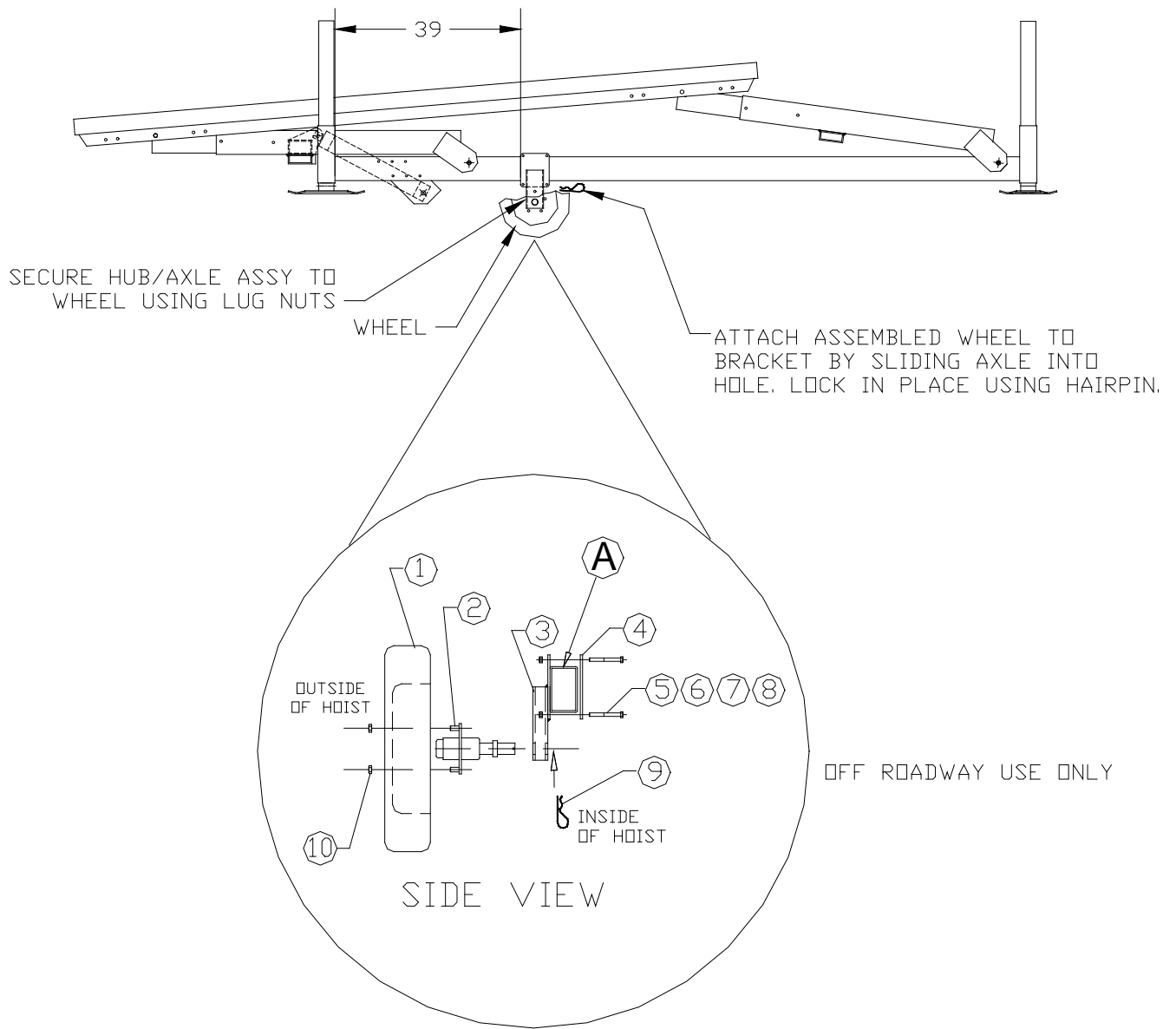


Figure 4-3.
HL5K & HL9K Wheel Kit (New style lifts)

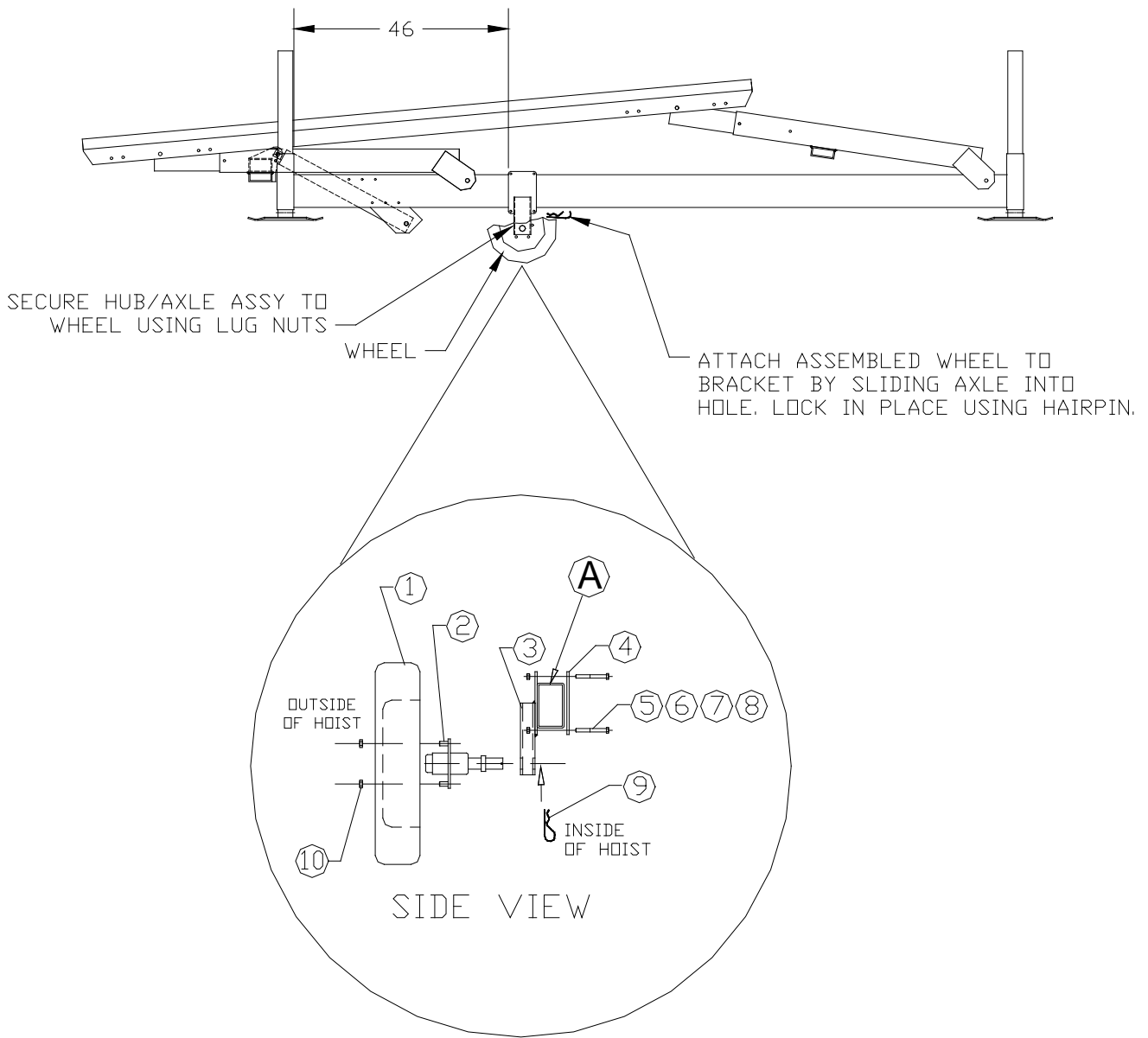


Figure 4-4.
HL7K Wheel Kit (New style lifts)