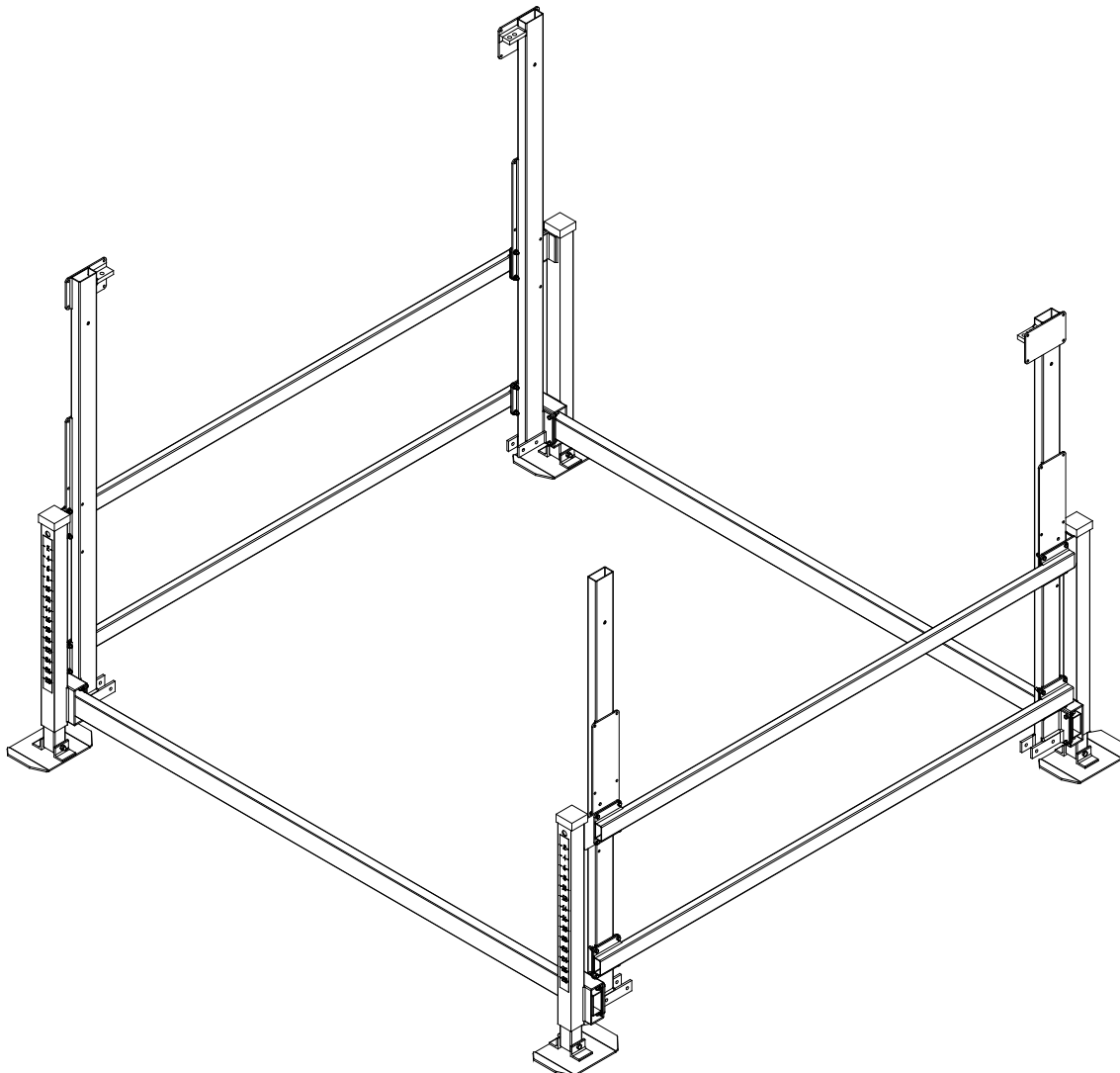




VL SCREW LEG INSTRUCTIONS

(Applies to P/Ns 3643167, 3643179, 3643143, 3643155)



REIMANN & GEORGER CORPORATION
MARINE PRODUCTS
P/N 6112047

BUFFALO, NY
04/23/18

1 SAFETY

1.1 INTRODUCTION

Your Reimann & Georger Corporation Marine Products VL Screw Extension Leg Kit is designed to raise your vertical lift to accommodate various water depths and variety of lake bottoms. Before assembly, read this manual, your vertical lift manual, and related equipment manuals thoroughly before installing this kit and operating your lift to provide maximum safety for all operating personnel, and to get the maximum benefit from your equipment.

1.2 SAFETY DEFINITIONS

A safety message alerts you to potential hazards that could hurt you or others or cause property damage. The safety messages or signal words for product safety signs are **DANGER**, **WARNING**, and **CAUTION**. Each safety message is preceded by a safety alert symbol and is defined as follows:

DANGER: Indicates an imminently hazardous situation which, if not avoided, **will** cause death or serious injury. This safety message is limited to the most extreme situations.

WARNING: Indicates a potentially hazardous situation which, if not avoided, **could** result in death or serious injury.

CAUTION: Indicates a potentially hazardous situation which, if not avoided, **may** result in minor or moderate injury. It may also be used to alert against unsafe practices and property-damage-only accidents.

1.3 EQUIPMENT SAFETY LABELS

These labels warn you of potential hazards that could cause injury. Read them carefully. If a label comes off or becomes illegible, contact a Reimann & Georger Corporation dealer for a replacement.

1.4 SAFETY RULES



WARNING:

DO NOT INSTALL THIS KIT AND OPERATE THE LIFT WITHOUT READING BOTH THIS MANUAL AND YOUR VERTICAL LIFT MANUAL. FAILURE TO DO THIS CAN LEAD TO EQUIPMENT MISUSE WITH RESULTING DAMAGE AND/OR SERIOUS PERSONAL INJURY. CONTACT YOUR RGC® MARINE DEALER IF YOU HAVE ANY QUESTIONS.

1. Do not install this kit without first replacing any damaged or defective parts.
2. The extension legs do not increase the rated capacity of the lift. Never use the lift beyond its rated capacity. This can damage the kit assembly, lift, and/or boat with resulting serious personal injury.
3. Never try using any part of this kit in an application for which it was not designed.
4. Do not weld or otherwise modify any part of this kit. Such alterations may weaken the structural integrity of the lift and void the warranty.
5. Do not try installing the extension legs with the weight of the boat on the lift. This can cause equipment damage and/or personal injury.
6. The following precautions must be observed when lifting any part of this equipment:
 - a. Be sure of your footing.
 - b. Bend your knees and lift with your legs.
 - c. Hold the equipment section close to your body when lifting.

7. After the extension legs are installed, the safety checks in Steps 8 through 26 must be performed on your lift prior to operation. Details on these checks are given in your vertical lift manual.
8. Before allowing anyone to operate the lift, be sure they fully understand the proper operating procedure.
9. Do not operate the lift under the influence of drugs, alcohol, or medication.
10. Keep people and pets clear during operation of the lift.
11. Keep fingers and clothing clear of all moving parts.
12. Never allow people in the boat any time it is suspended above the water on the platform.



WARNING:

DO NOT STAND OR WALK ON THE PLATFORM WHILE IT IS IN ANY RAISED POSITION. THIS CAN CAUSE SERIOUS PERSONAL INJURY.

13. Do not allow anyone to swim or play under, near or on the lift at any time.
14. Insure that all bolts and nuts are fastened securely on both this kit and the lift prior to operation.
15. Insure that the frame is level and square.
16. Completely remove any user or dealer installed locking devices before operating the lift.
17. The boat must be secured on the lift before raising or lowering. Failure to do this can cause equipment damage and/or serious personal injury.
18. Check the lift periodically for frayed cables and/or binding pulleys. If any pulley binds, replace it immediately.
19. Do not try making any adjustments on the lift during operation.
20. Contact your dealer if the winch mechanism fails to perform as described in the Operation chapter of your vertical lift manual.
21. Never tamper with the winch mechanism. This can cause equipment damage.
22. When using a direct drive or motorized friction drive, understand the use of all controls and connections provided with it.



WARNING:

ALL ELECTRIC DRIVES MUST BE INSTALLED AND INSPECTED BY A CERTIFIED ELECTRICIAN IN ACCORDANCE WITH LOCAL ELECTRICAL CODES. THIS INSTALLATION MUST INCLUDE A PROPERLY WORKING GROUND FAULT CIRCUIT INTERRUPTER. (G.F.C.I.)

23. Never use the lift to hang or store any auxiliary equipment such as boating hardware.
24. The handwheel or power drive must turn clockwise when raising the platform and counter-clockwise when lowering the platform. If the platform operates in the reverse sense, you have reeved the winch incorrectly. You MUST follow the winch reeving instructions in your vertical lift manual to prevent equipment damage and/or personal injury. The brake pawl must click during platform raising, indicating that the brake is operative. The self-activating brake mechanism must provide a controlled lowering of the platform.



WARNING:

NEVER RELEASE THE BRAKE PAWL OF THE WINCH. THIS CAN TRIGGER AN UNCONTROLLED SPIN-DOWN OR “FREEWHEEL” OF THE HANDWHEEL. IF FREEWHEELING OCCURS, NEVER TRY TO STOP IT AS THIS CAN CAUSE SERIOUS PERSONAL INJURY.

25. Padlock the handwheel to the post or lock out your power drive to prevent unauthorized use when your lift is left unattended.
26. Never adjust the height of the legs with a boat on a lift. Always make the leg adjustments with an empty platform on the lift.



WARNING:

NEVER ADJUST THE LEG HEIGHT WHEN THERE IS A BOAT ON THE LIFT, DOING SO CAN CAUSE SERIOUS PERSONAL INJURY.

2 INSTALLATION AND SETUP

2.1 PRE-INSTALLATION CHECKS

1. Do not install this kit and operate the lift without reading both this manual and your vertical lift manual. Failure to do this can lead to equipment misuse with resulting damage and/or personal injury.
2. Do not install this kit without first replacing any damaged or defective parts.
3. Do not weld or otherwise modify any part of this kit. Such alterations may weaken the structural integrity of the lift and void the warranty.
4. This product has been supplied with stainless steel hardware to protect against a harsh marine environment and provide outstanding performance. Due to the chemistry and surface condition of stainless steel, there is a natural tendency for the hardware to “gall, lock up, or seize” during assembly. To prevent this from occurring, it is **highly recommended** that the anti-seize supplied in the hardware bag be applied to the mating surfaces of all stainless steel fasteners before assembly. Lubricants containing molybdenum disulfide, graphite, mica or talc may also be used.
5. Do not try installing the legs with the weight of the boat on the lift. This can cause equipment damage and/or personal injury.



CAUTION:

DO NOT EXCEED THE MAXIMUM TORQUE RATING ON ALL BOLTS OF 20 FT-LBS.



WARNING:

FAILURE TO APPLY A SUITABLE LUBRICANT TO THE MATING SURFACES OF STAINLESS STEEL THREADED FASTENERS MAY CAUSE GALLING AND/OR SEIZING OF ASSEMBLY.

2.2 MOUNTING THE SCREW LEGS

1. **Refer to Figure 2-2.** Assemble the foot plate to the bottom end of the extension leg using a 1/2-13 x 4-1/2” HHCS and 1/2” locknut.
2. The screw legs mount to the vertical legs of the lift. The top plate of the screw leg mounts between the top side horizontal and the plate on the vertical leg. The bottom of the screw leg has a tube that lines up to the front of the vertical leg where the front horizontal mount plate is. The front horizontal slides into the tube. Fasten together using 3/8 X 1-1/2” hex screws and the lock nuts that were already supplied with your vertical lift.
3. Ensure that the lift frame and platform will be level and square when installed.

2.3 MOVING LIFT TO OPERATING POSITION

1. Before moving lift to operating position, ensure the completed screw leg assembly appears as shown in **Figure 2-3** and all hardware is securely fastened.
2. The following precautions must be observed when moving your lift:
 - a. Be sure of your footing.
 - b. Bend your knees and lift with your legs.
 - c. Hold the lift section close to your body when lifting.
3. After moving your lift to the operating position, ensure that the frame is square and that the lift sets level.

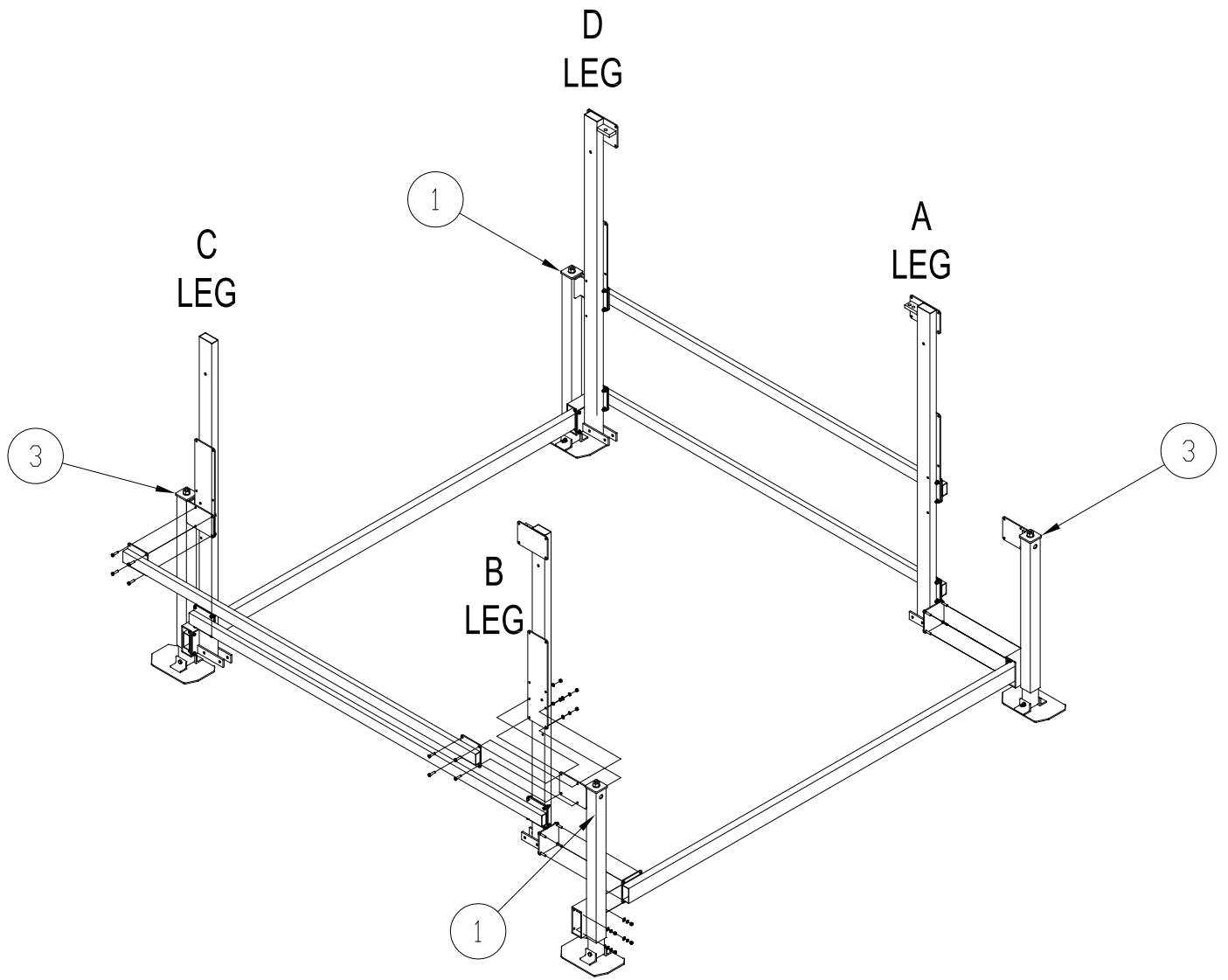
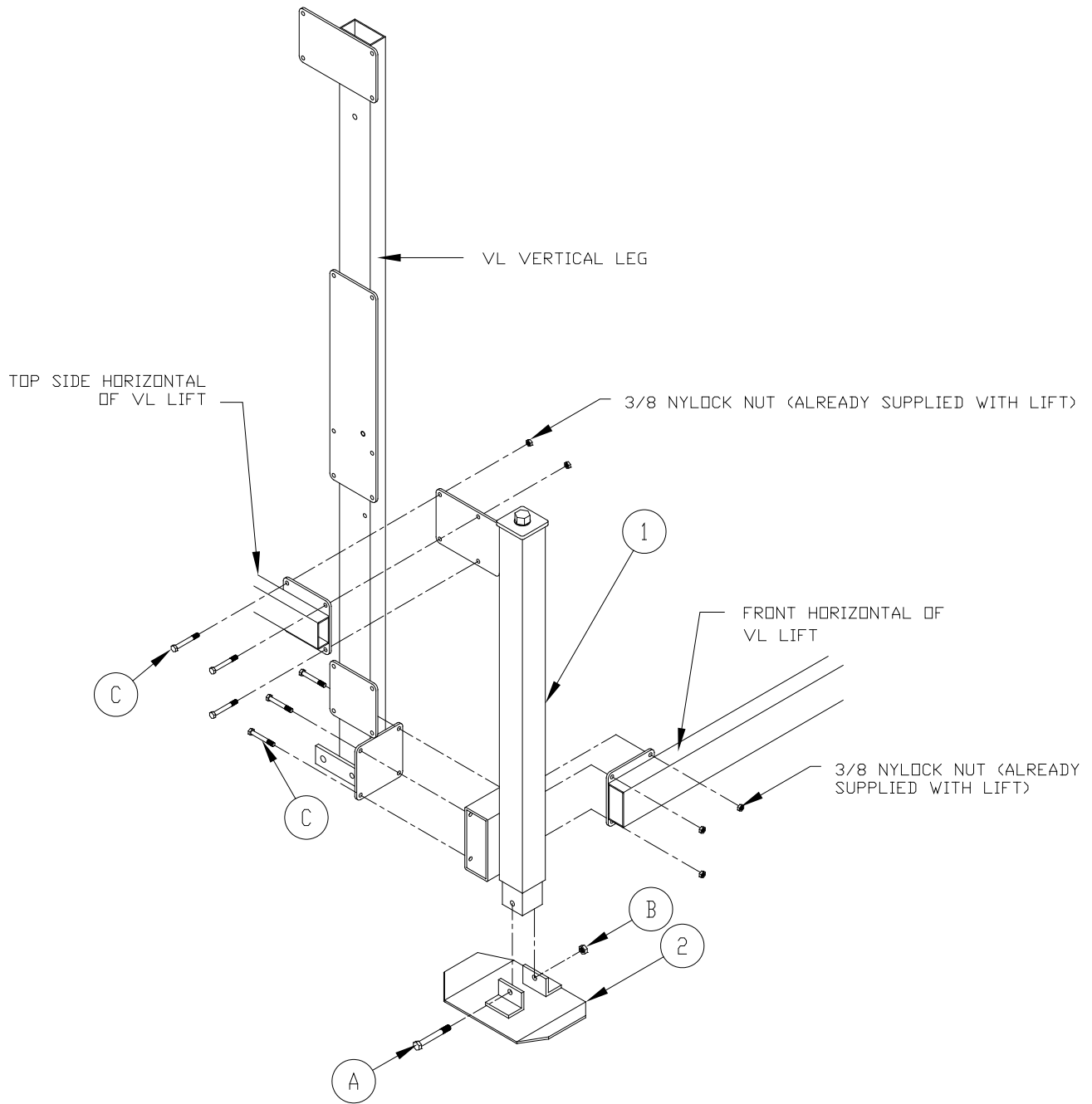
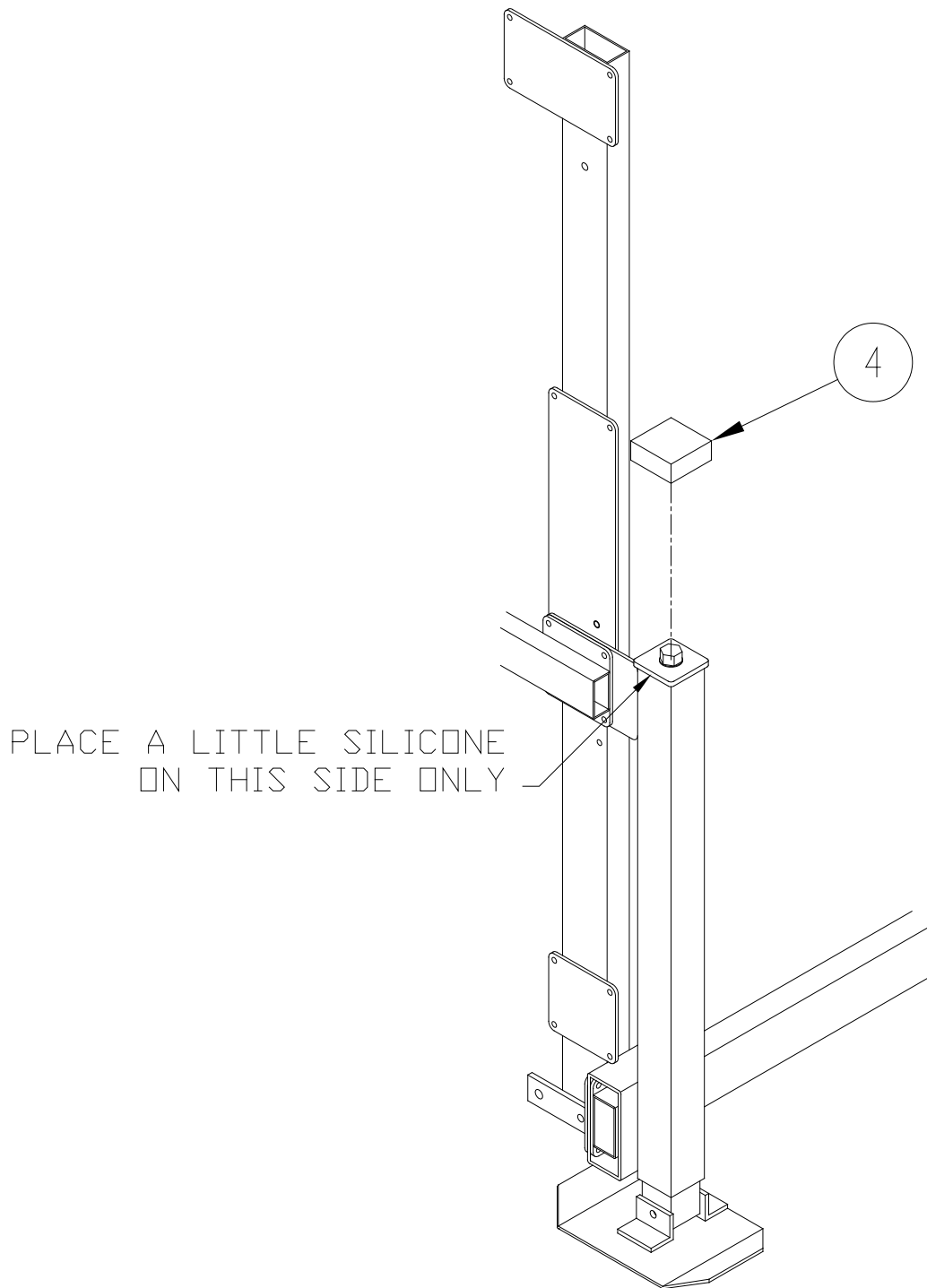


Figure 2-1
Exploded View of Assembly



**Figure 2-2
Assembly**



**Figure 2-3
Assembled**

2.4 OPERATING SCREW LEGS

1. To operate the screw legs use a 1-1/4" socket to turn the nut on top of the leg. Turning the nut counter-clockwise extends the leg, turning the nut clockwise retracts the leg.
2. There is 30 inches of adjustment on the screw leg. If using a drill with a socket to raise and lower the leg, use caution when the leg is close to being either fully retracted or fully extended so that the drill doesn't jerk your hand when the leg reaches its internal stop.
3. **NEVER** raise or lower the screw legs when there is a load on the platform. Only adjust the leg height with an empty platform.
4. Once the legs are adjusted to the desired height, place the square vinyl cap over the top of the leg as shown in Figure 2-3. Place a little silicone on only one side of the top plate before placing the cap on top. The cap is flexible enough that it can be bent over to access the nut to adjust the height of the leg if adjustments are needed.



CAUTION:

WHEN THE LEG IS GETTING CLOSE TO BEING EITHER FULLY EXTENDED OR FULLY RETRACTED, USE CAUTION WHEN TURNING THE NUT ON TOP OF THE LEG.

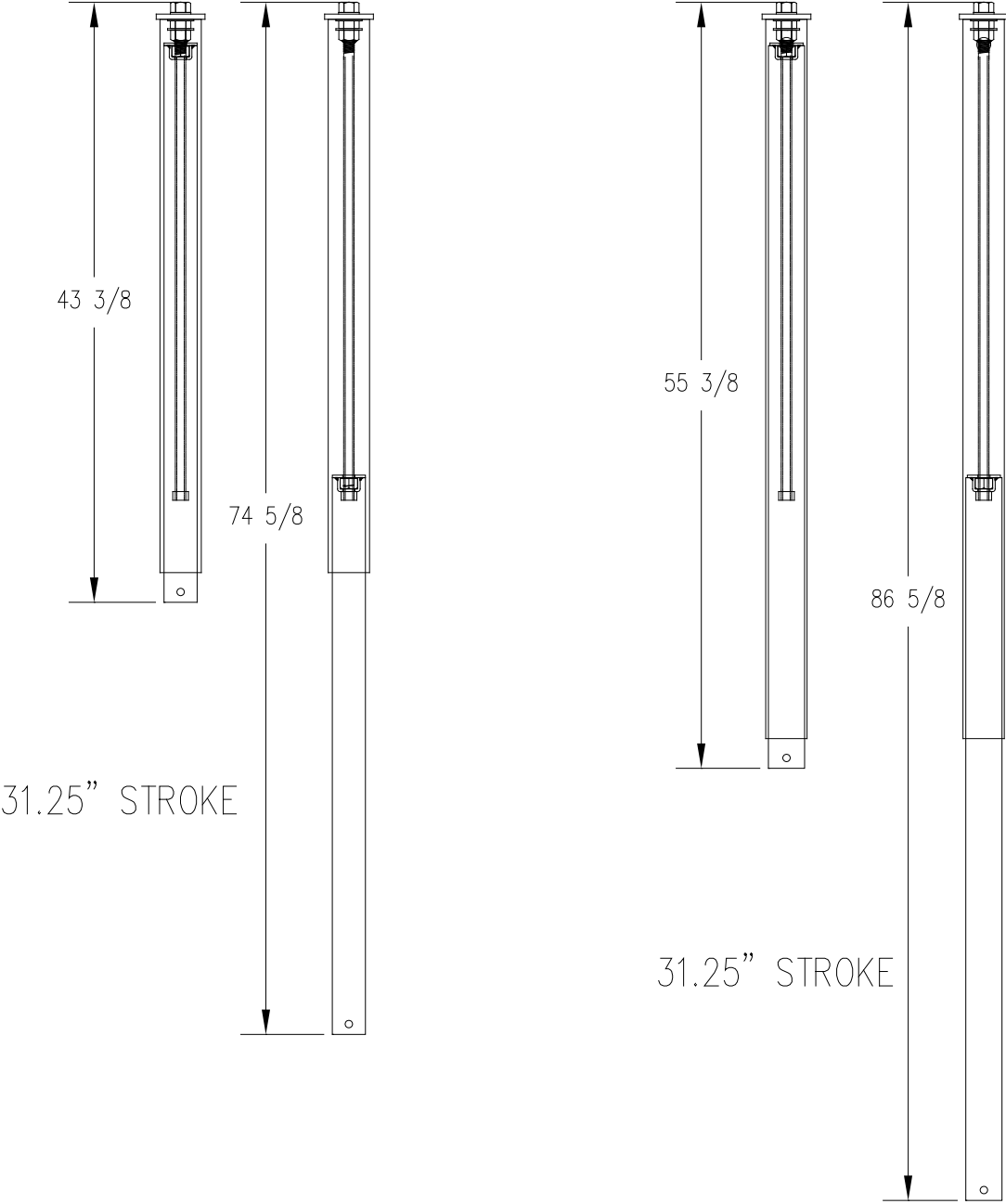


WARNING:

NEVER ADJUST THE HEIGHT OF THE LEGS WITH A LOAD ON THE LIFT PLATFORM. ONLY ADJUST THE LEG HEIGHT WHEN THERE PLATFORM IS EMPTY. ADJUSTING THE HEIGHT WHILE A BOAT OR ANY LOAD ON THE PLATFORM COULD CAUSE SERIOUS PERSONAL INJURY.

2.5 SCREW LEG STROKE

1. Both the standard and the tall have 31.25 inches of travel as shown in Figure 2-4.



**Figure 2-4
Leg Stroke**

4 PARTS LIST

Each reference number in the following parts lists can be matched with the reference number referred to in the illustrations of the instruction manual.



WARNING:

FAILURE TO APPLY A SUITABLE LUBRICANT TO THE MATING SURFACES OF STAINLESS STEEL THREADED FASTENERS MAY CAUSE GALLING AND/OR SEIZING OF ASSEMBLY.

#3643167 VL SCREW LEG PIN STD BDL

REF #	PART #	QTY	DESCRIPTION
1	3643302	1	VL SCREW LEG LH STD ASSY PIN (used on B & D leg)
3	3643305	1	VL SCREW LEG RH STD ASSY PIN (used on A & C leg)
2	3643645	2	VL FOOT PLATE ASSY (12X16)
	3643217	1	VL SCREW LEG BOB (see below)
	3642220	1	VL SCREW LEG CAP BAG (see below)

#3643179 VL SCREW LEG PIN -TALL BDL

REF #	PART #	QTY	DESCRIPTION
1	3643308	1	VL SCREW LEG LH -TALL ASSY PIN (used on B & D leg)
3	3643311	1	VL SCREW LEG RH -TALL ASSY PIN (used on A & C leg)
2	3643645	2	VL FOOT PLATE ASSY (12X16)
	3643217	1	VL SCREW LEG BOB (see below)
	3643220	1	VL SCREW LEG CAP BAG (see below)

#3643217 VL SCREW LEG BOB

REF #	PART #	QTY	DESCRIPTION
A	5896293	2	HHCS 1/2-13 X 4-1/2 SS
B	5897018	2	NUT HEX NYLOCK 1/2-13 SS/WAX
C	5896249	16	HHCS 3/8-16 X 1-1/2 SS

#3643220 VL SCREW LEG CAP BAG

REF #	PART #	QTY	DESCRIPTION
4	6436431	2	CAP SQ 3-1/2"X1-1/2"L VINYL